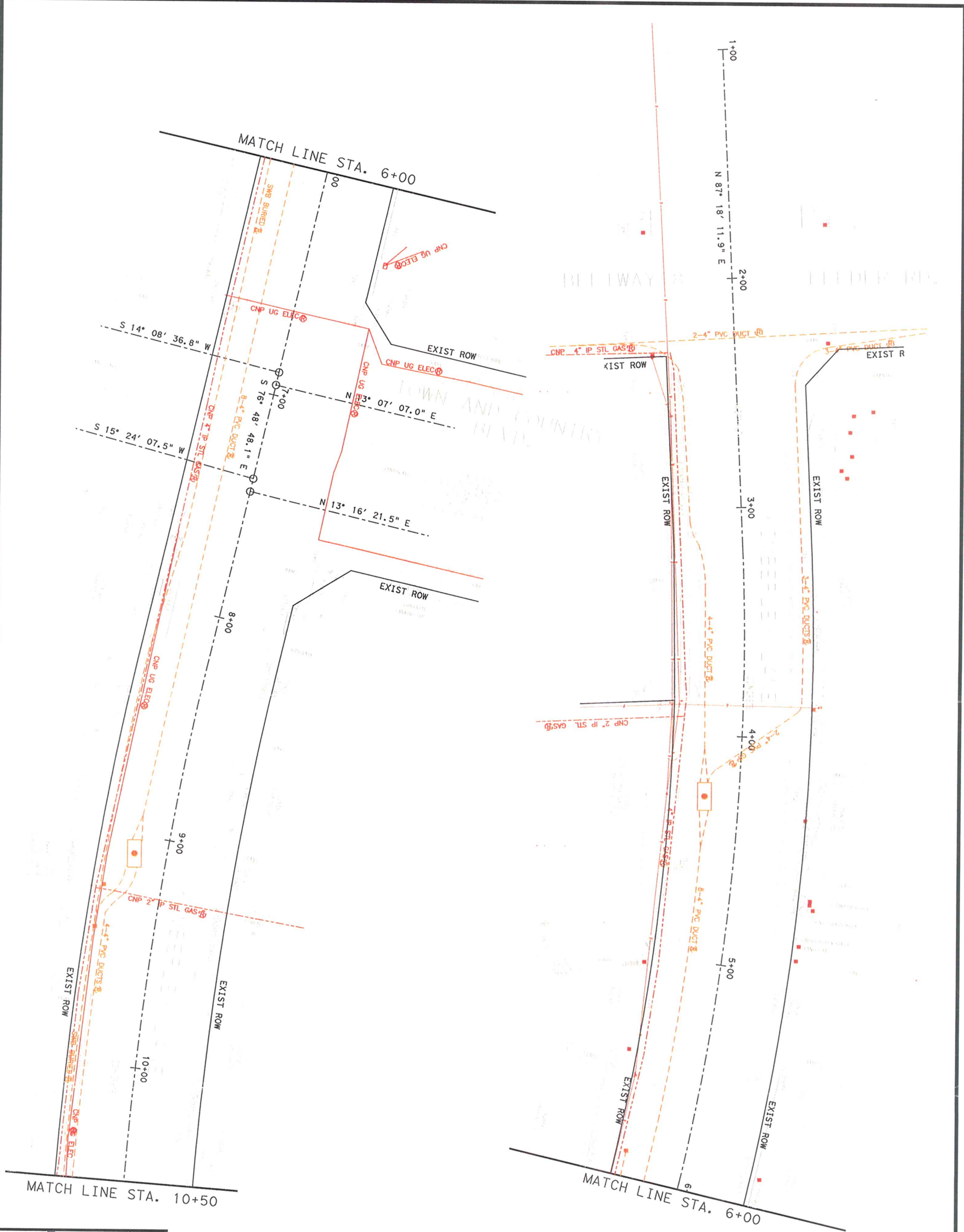




**APPENDIX E**  
**PUBLIC/PRIVATE UTILITIES**



**LEGEND**

- - - SBC
- - - CENTERPOINT
- ELECTRIC

0 20 40 80  
 (IN FEET)  
 1 INCH = 40 FEET

**INTERIM REVIEW ONLY**  
 Document incomplete: not intended for permit, bidding or construction.

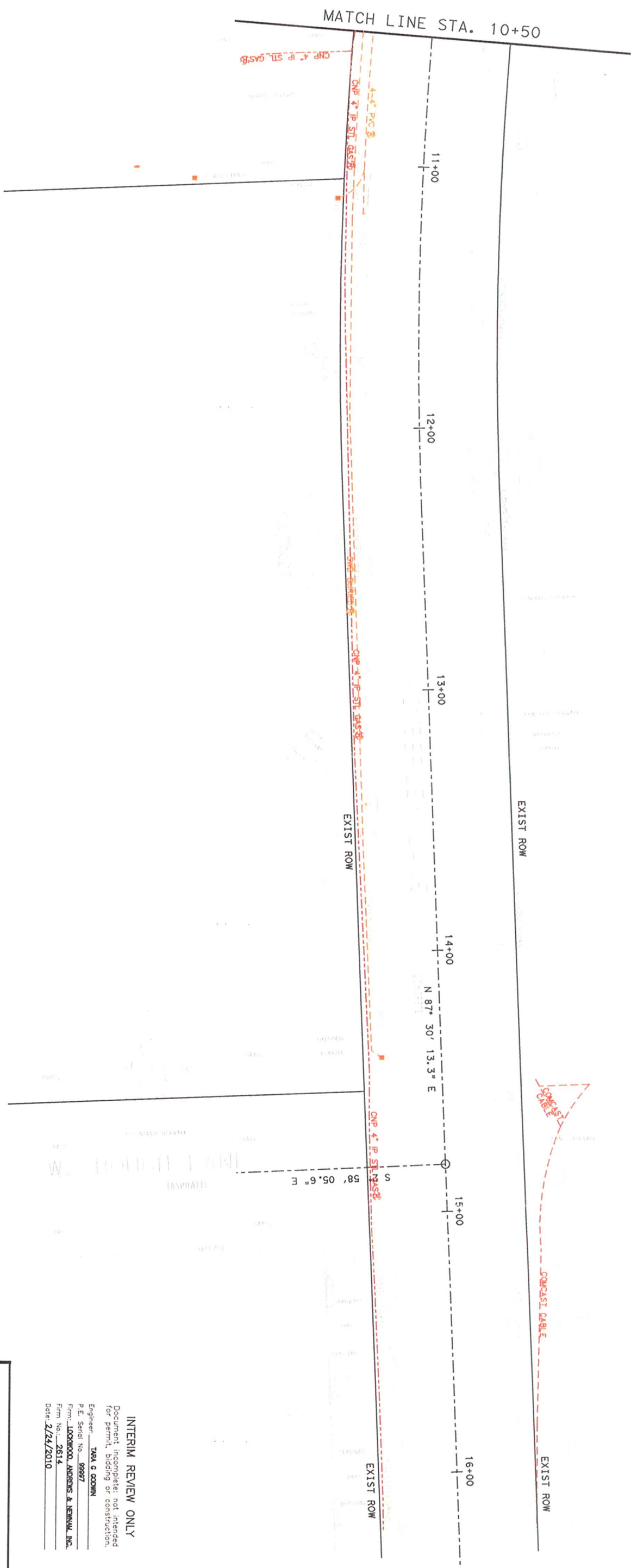
Engineer: **TARA G. COOMBS**  
 P.E. Serial No. 99997  
 Firm: **LOCKWOOD, ANDREWS & NEWNAM, INC.**  
 Firm No.: 2814  
 Date: 2/24/2010

MEMORIAL CITY  
 REDEVELOPMENT AUTHORITY

APPENDIX E. 2

KIMBERLEY ROAD  
 WBS NO. T-170018-0001-3  
 EXISTING PRIVATE UTILITY LINES  
 SHEET 1 OF 2

**IGN** Lockwood, Andrews & Newnam, Inc.  
 2925 Burgoyne Drive  
 Houston, TX 77042



**INTERIM REVIEW ONLY**  
 Document incomplete; not intended for permit, bidding or construction.  
 Engineer: **TARA S. COOMIN**  
 P.E. Serial No.: **99997**  
 Firm: **LOCKWOOD, ANDREWS & NEWMILL, INC.**  
 Firm No.: **2614**  
 Date: **2/24/2010**

**LEGEND**

- SBC
- CENTERPOINT
- ELECTRIC

**MEMORIAL CITY REDEVELOPMENT AUTHORITY**

**APPENDIX E.2**

**KIMBERLEY ROAD**

**WBS NO. T-170018-0001-3**

**EXISTING PRIVATE UTILITY LINES**

**SHEET 2 OF 2**

