

# TIRZ 17 Regional Drainage Study Presentation

June 29, 2011



# Presentation Outline

- TIRZ 17 RDS Background
- W140-01-00 Briar Branch
- W151-00-00
- W153-00-00
- Summary

DRAFT  
PRELIMINARY  
SUBJECT TO CHANGE  
JUNE 29, 2011

6/29/2011



# Presentation Outline

- **TIRZ 17 RDS Background**
- **W140-01-00 Briar Branch**
- **W151-00-00**
- **W153-00-00**
- **Summary**

DRAFT  
PRELIMINARY  
SUBJECT TO CHANGE  
JUNE 29, 2011

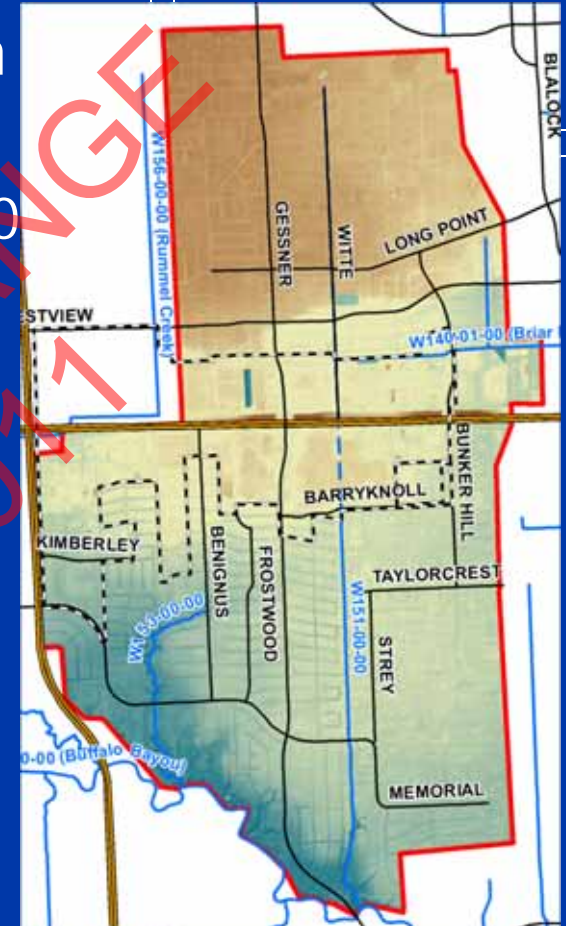
6/29/2011



# Background

## TIRZ 17 RDS Background

- Builds on HCFCD W151 Study Released in 2009
  - Expanded to include W153 and W140-01-00
  - Detailed analysis of storm sewer
  - Overland flow analysis
- Addresses Regional Drainage Issues
  - Interconnected Systems
    - W151 and W140-01 (Briar Branch)
  - System and Basin Overflow
    - W151 to W153



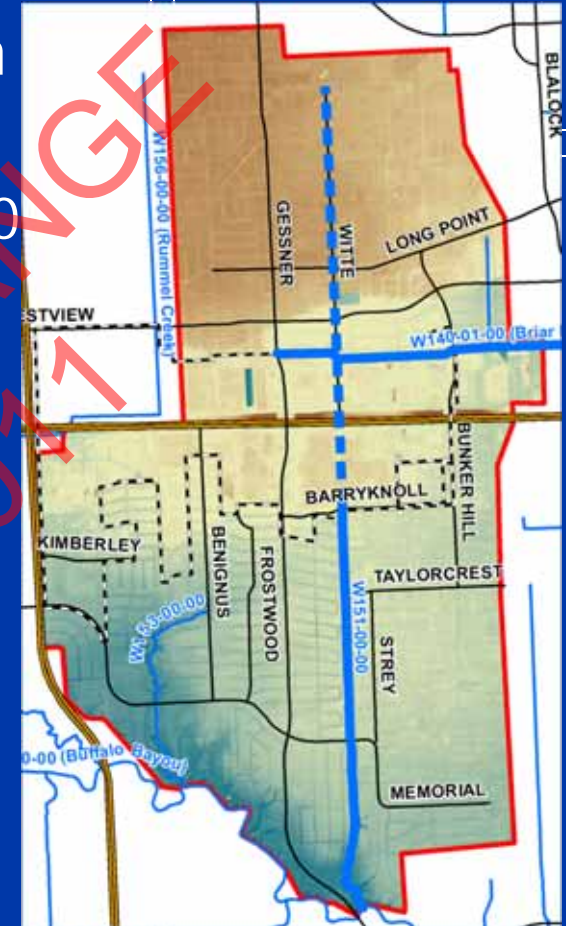
6/29/2011



# Background

## TIRZ 17 RDS Background

- Builds on HCFCD W151 Study Released in 2009
  - Expanded to include W153 and W140-01-00
  - Detailed analysis of storm sewer
  - Overland flow analysis
- Addresses Regional Drainage Issues
  - Interconnected Systems
    - W151 and W140-01 (Briar Branch)
  - System and Basin Overflow
    - W151 to W153



6/29/2011



# Background

## TIRZ 17 RDS Background

- Builds on HCFCD W151 Study Released in 2009
  - Expanded to include W153 and W140-01-00
  - Detailed analysis of storm sewer
  - Overland flow analysis
- Addresses Regional Drainage Issues
  - Interconnected Systems
    - W151 and W140-01 (Briar Branch)
  - System and Basin Overflow
    - W151 to W153



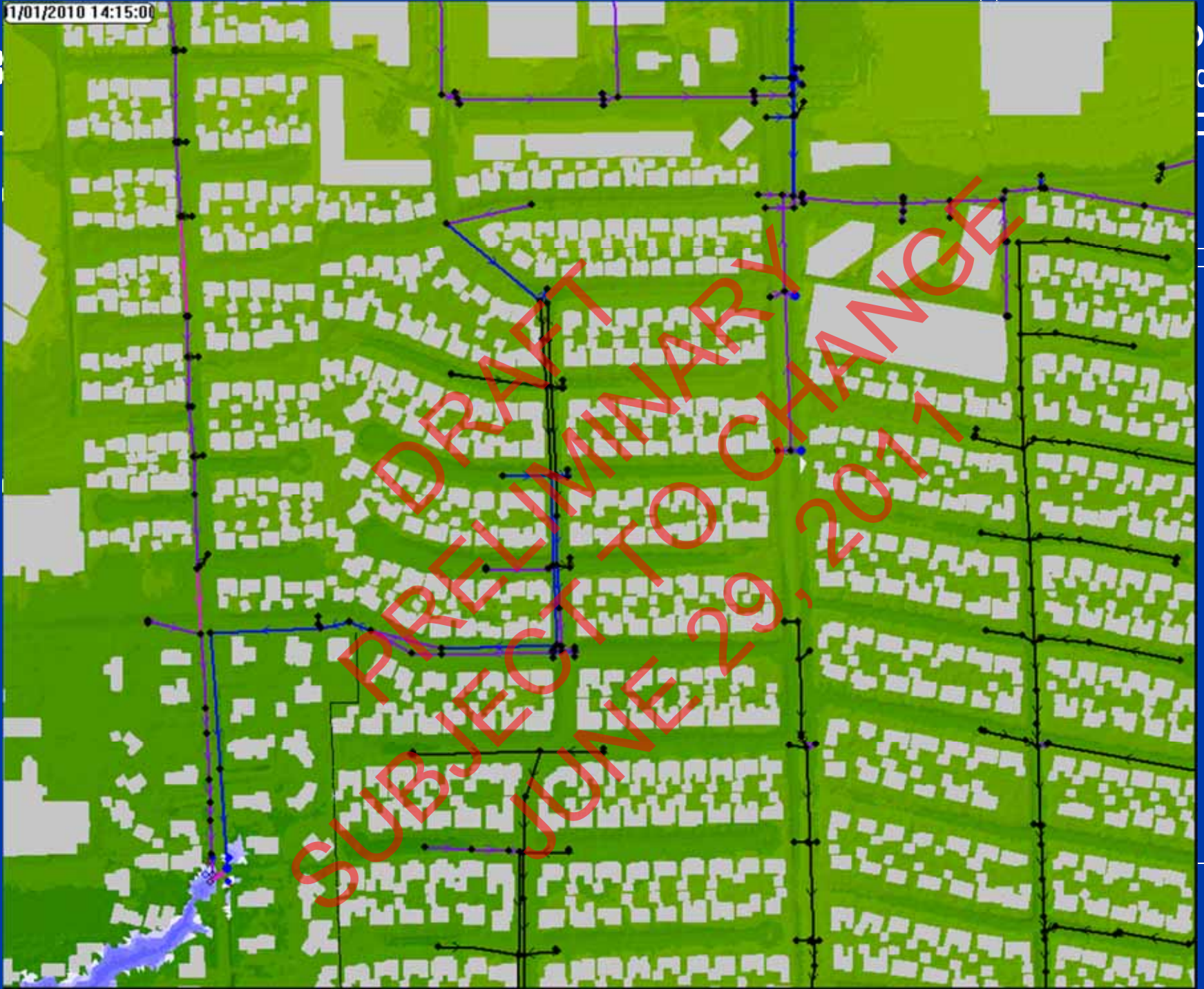
6/29/2011



11/01/2010 14:15:00

B

S  
d



DRAFT/PROVISIONAL  
SUBJECT TO CHANGE

# Background

TIRZ 17 RDS  
Background

- **Builds on HCFCD W151 Study Released in 2009**
  - Expanded to include W153 and W140-01-00
  - Detailed analysis of storm sewer
  - Overland flow analysis
- **Addresses Regional Drainage Issues**
  - Interconnected Systems
    - W151 and W140-01 (Briar Branch)
  - System and Basin Overflow
    - W151 to W153
- **Goal:**
  - Identify cost effective solutions that benefit the community at large with a focus on TIRZ 17 CIP projects

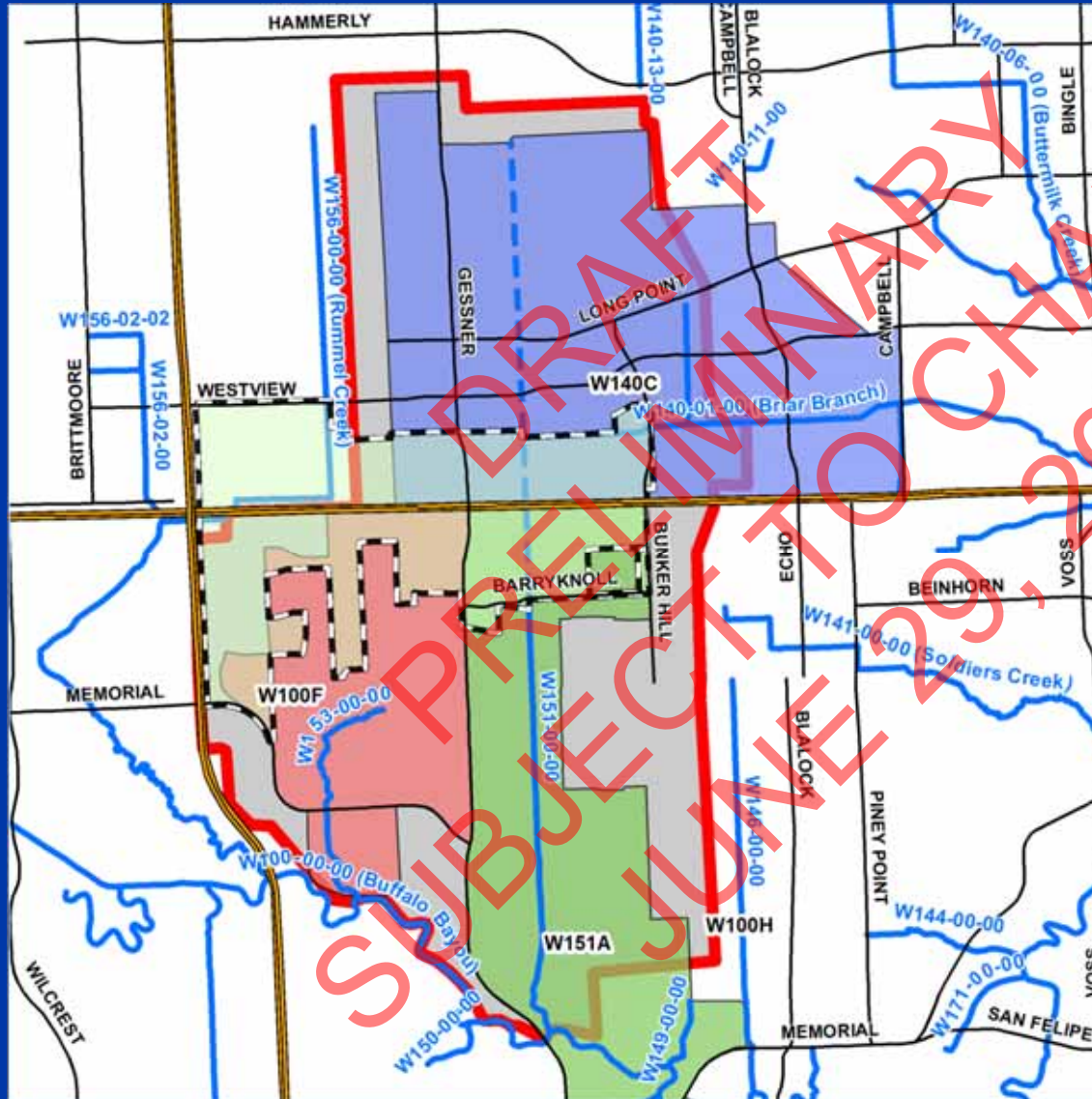
6/29/2011





# Background

## TIRZ 17 RDS Background



	Area (Ac.)
TIRZ 17	988
Study	4,000

### Legend

- TIRZ 17
- TRDS Limits
- TSARP Catchments**
- SUBBASIN**
- W100F
- W140C
- W151A
- HCFCD Channels

6/29/2011

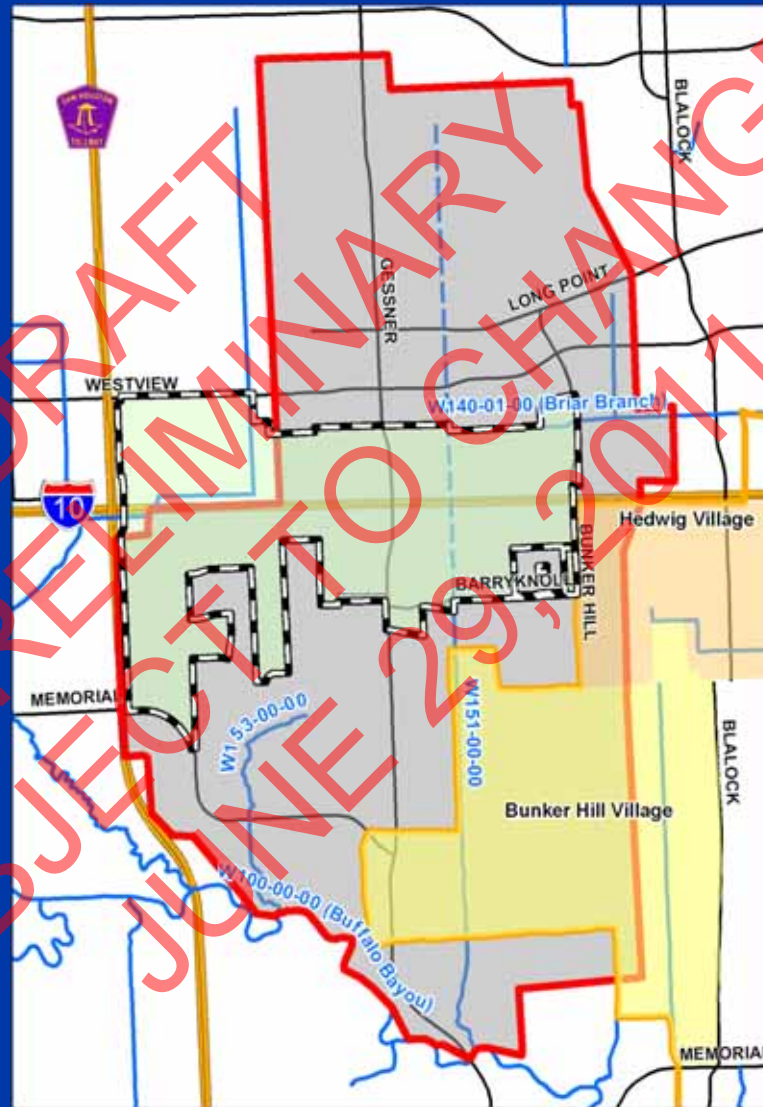


# Background

## TIRZ 17 RDS Background

### Multiple Jurisdictions

- TIRZ 17
- City of Houston
- Bunker Hill Village
- Hedwig Village
- HCFCD
- TxDOT



### Legend

- TIRZ 17
- Houston City Limits
- Bunker Hill Village
- Hedwig Village
- Spring Valley
- HCFCD Channels

6/29/2011





# Public Involvement

## TIRZ 17 RDS Background

- Stakeholder Meetings
  - 6 Conducted
- Drainage Questionnaire
  - 435 Received

Please Return By March 29<sup>th</sup>, 2010

### W151/W153 Watershed Drainage Problems Survey - North

The City of Houston TIRZ 17 is conducting a multi-watershed regional drainage study in your area and is requesting your input to identify drainage problem locations. Please complete the following survey and return via one of the methods listed below.

Mail to: Lockwood, Andrews & Newman, Inc. • 2923 Briar Park Dr., Suite 400 • Aliso Viejo, CA 92656 • Houston, TX 77042  
Fax to: 714-265-2011 Attn: Matt Wanges Or Email to: W151Survey@lan-inc.com

Name and Address: \_\_\_\_\_  
\_\_\_\_\_

Additional Contact Information (if desired):  
Phone: \_\_\_\_\_  
Email: \_\_\_\_\_

Drainage Problems Observed (check all that apply)

Documented High Water Marks

Street Flooding/Ponding  <4"  4"-1'  1'-2'  >2'

Street Inaccessible  yes  no

Structural Flooding  <4"  4"-1'  1'-2'  >2'

Prolonged Flooding/Ponding, Estimated Duration:  
 <10 min  10-20 min  20-60 min  1 hr  >1 hr

Concentrated Overland Flow

Streets Blocked by Debris/Clogged

Water Coming Up Through Manholes & Inlets

Water Out of Channel Banks

Water in Channel Overtops Bridge or Culvert

Available Photos and/or Videos

Describe the drainage problems or high water marks you have observed:  
\_\_\_\_\_  
\_\_\_\_\_  
\_\_\_\_\_  
\_\_\_\_\_  
\_\_\_\_\_  
\_\_\_\_\_  
\_\_\_\_\_  
\_\_\_\_\_  
\_\_\_\_\_

When were these problems observed?  
 April 27-28, 2009 Storm Event  
 Hurricane Ike - September 13, 2008  
 Other Storm Event on \_\_\_\_\_

Besides the above dates, what frequency have you noticed the problems listed above?  
 Less than 1 Time Per Year  
 1-2 Times Per Year  
 3-5 Times Per Year  
 6-10 Times Per Year  
 Every Rainfall Event

Describe the locations of the drainage problems or high water marks observed:  
\_\_\_\_\_  
\_\_\_\_\_  
\_\_\_\_\_  
\_\_\_\_\_  
\_\_\_\_\_

Additional Comments:  
\_\_\_\_\_  
\_\_\_\_\_  
\_\_\_\_\_  
\_\_\_\_\_  
\_\_\_\_\_

- Please indicate locations of observed drainage problems, extents of flooding, or high water mark locations on the map located on the reverse of this page.
- Include any pictures or videos you may have as evidence of high water marks tied to dated events. Media will be returned upon request.

DRAFT  
PRELIMINARY  
SUBJECT TO CHANGE  
JUNE 29, 2010

6/29/2011



# Public Involvement

TIRZ 17 RDS  
Background

- Stakeholder Meetings
  - 6 Conducted
- Drainage Questionnaire
  - 435 Received

Please Return By March 29<sup>th</sup>, 2010

W151A

The City of  
in your  
Please cc  
Mail to: Li

Name and Address  
\_\_\_\_\_  
\_\_\_\_\_  
\_\_\_\_\_

Additional Contact  
Phone: \_\_\_\_\_  
Email: \_\_\_\_\_

Drainage Problem (check all that apply)  
 Documented High  
 Street Flooding (P)  
Street is \_\_\_\_\_  
 Structural Flooding  
 Prolonged Flooding  
\_\_\_\_\_  
 Concentrated Over  
 Storms Blocked by  
 Water Coming Up  
 Water Out of Channel  
 Water in Channel  
 Available Photos: \_\_\_\_\_

Describe the drainage  
marks you have:  
\_\_\_\_\_  
\_\_\_\_\_  
\_\_\_\_\_

Please Document Drainage Problem Locations and Provide Supporting Documentation on Reverse

Observed Drainage Problems - North of IH-10

Legend

Scale: 0 100 200 Feet

North Arrow

Hammerly Blvd

Westview Dr

Village Plaza

W140-01-00 (Blair Branch)

Blair Branch

Long Point Rd

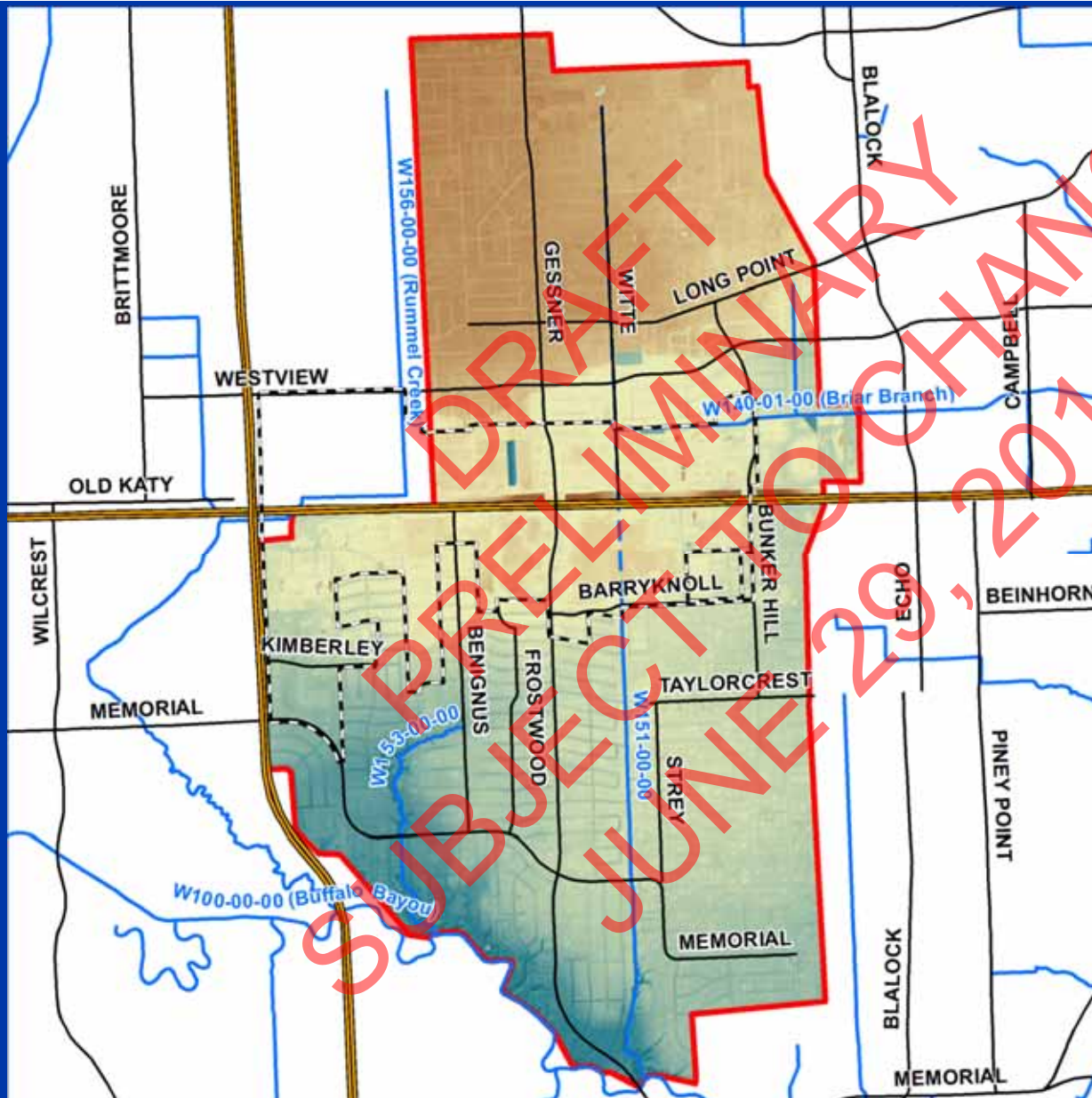
Blair Hill Rd

West 10



# TIRZ 17 Regional Drainage Study

TIRZ 17 RDS  
Background

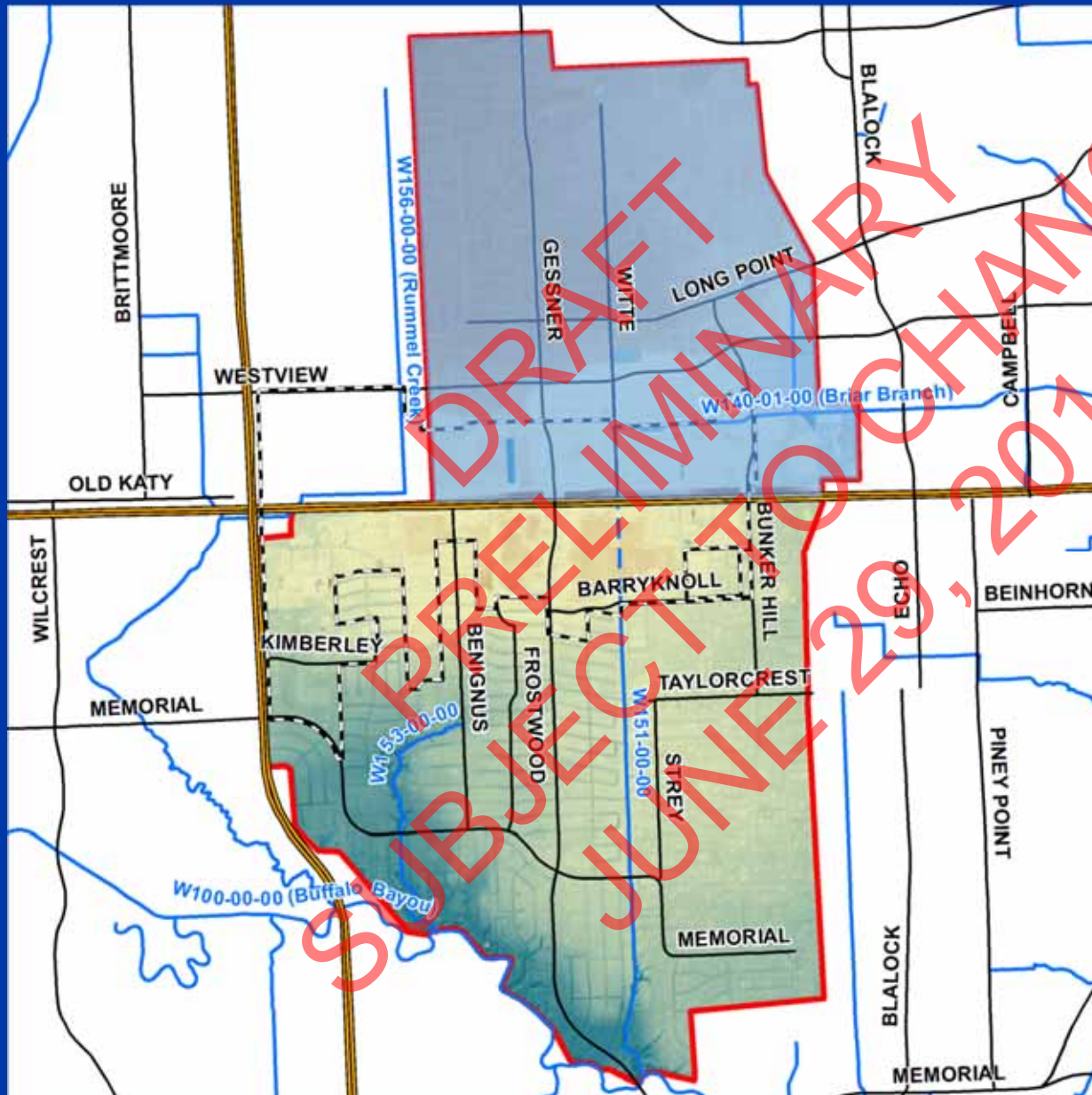


6/29/2011



# W140-01-00 Briar Branch Watershed

TIRZ 17 RDS  
Background



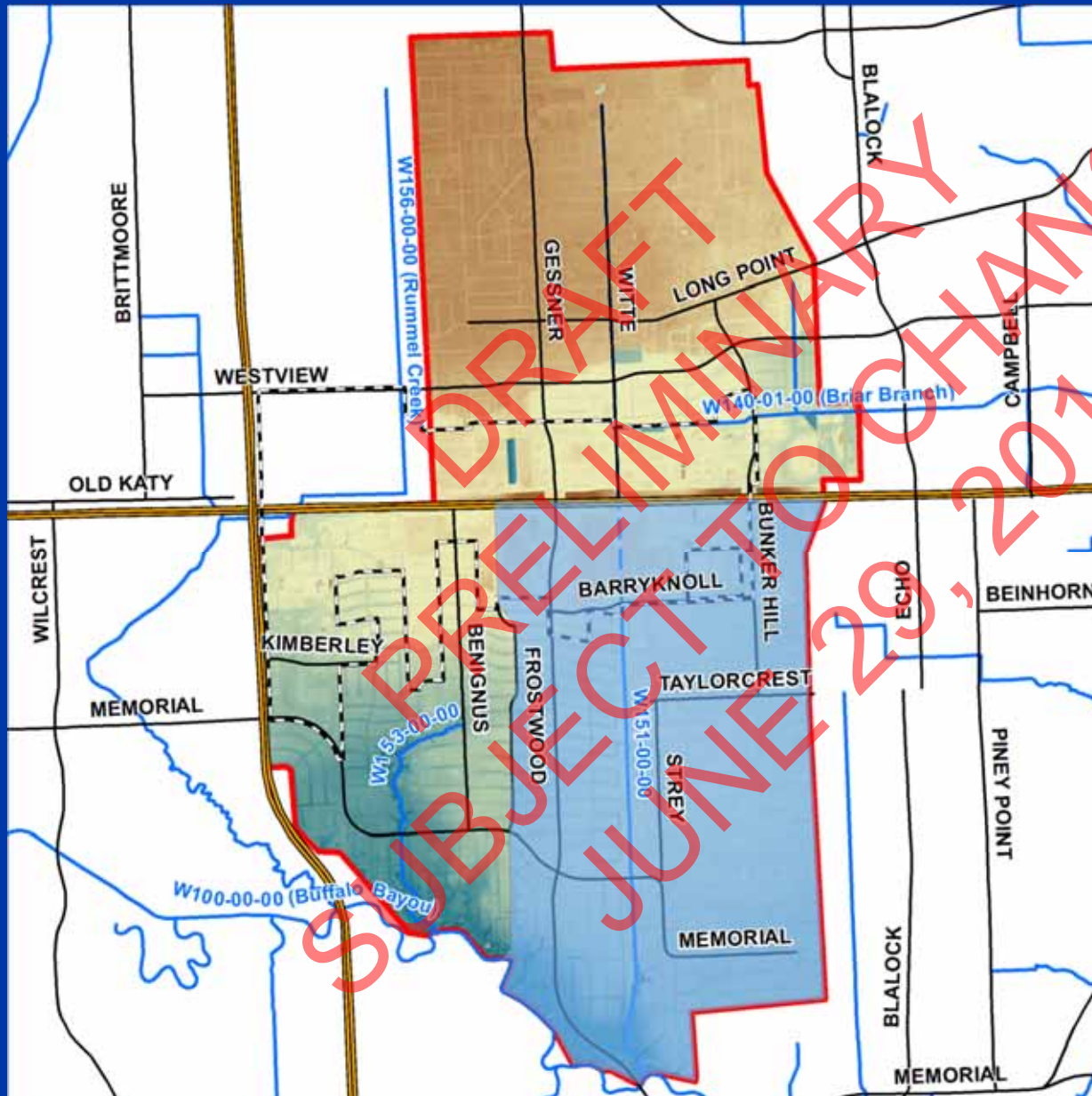
6/29/2011





# W151-00-00 Watershed

TIRZ 17 RDS  
Background

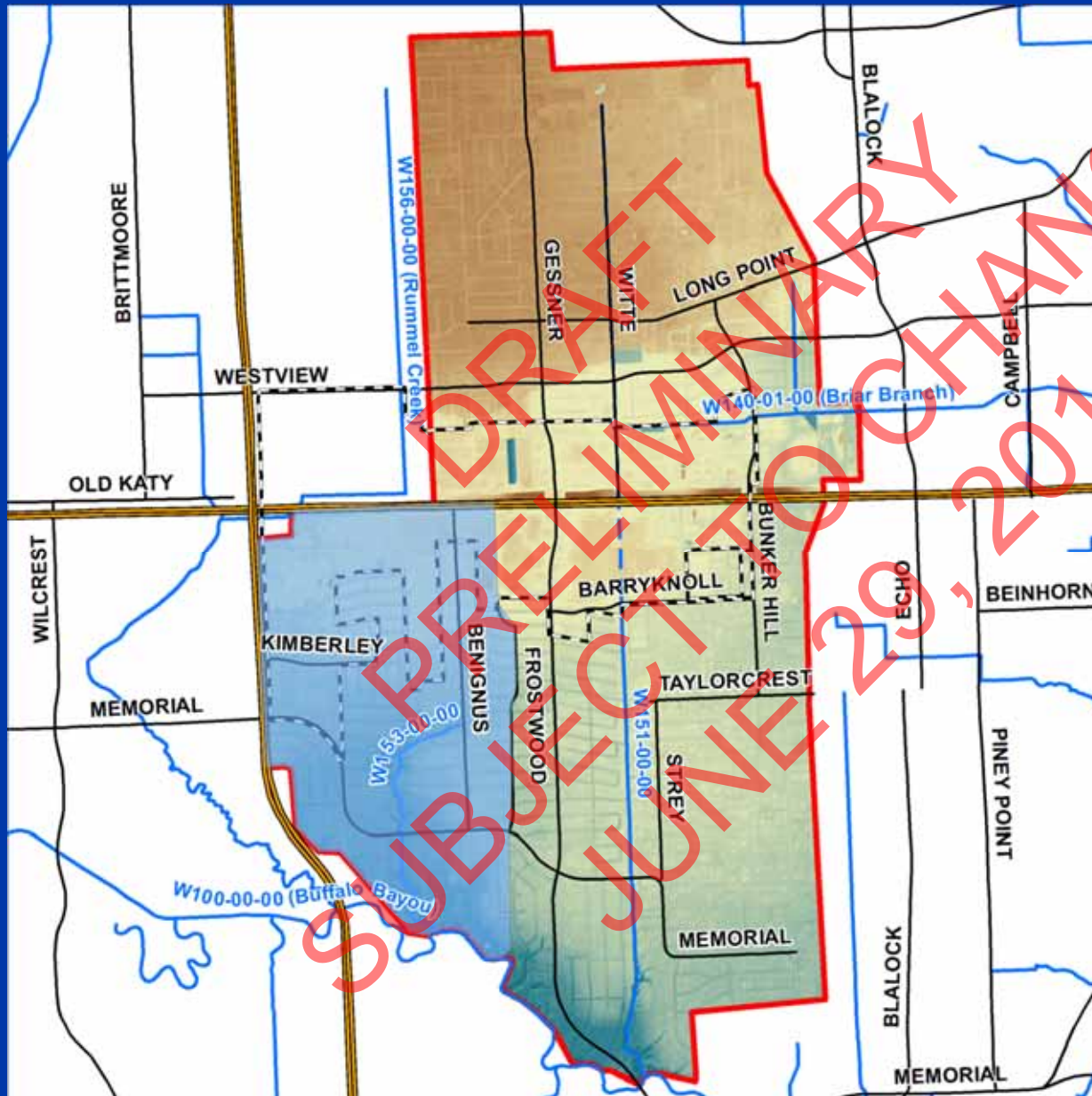


6/29/2011



# W153-00-00 Watershed

TIRZ 17 RDS  
Background



6/29/2011



# Presentation Outline

- TIRZ 17 RDS Background
- **W140-01-00 Briar Branch**
- W151-00-00
- W153-00-00
- Summary

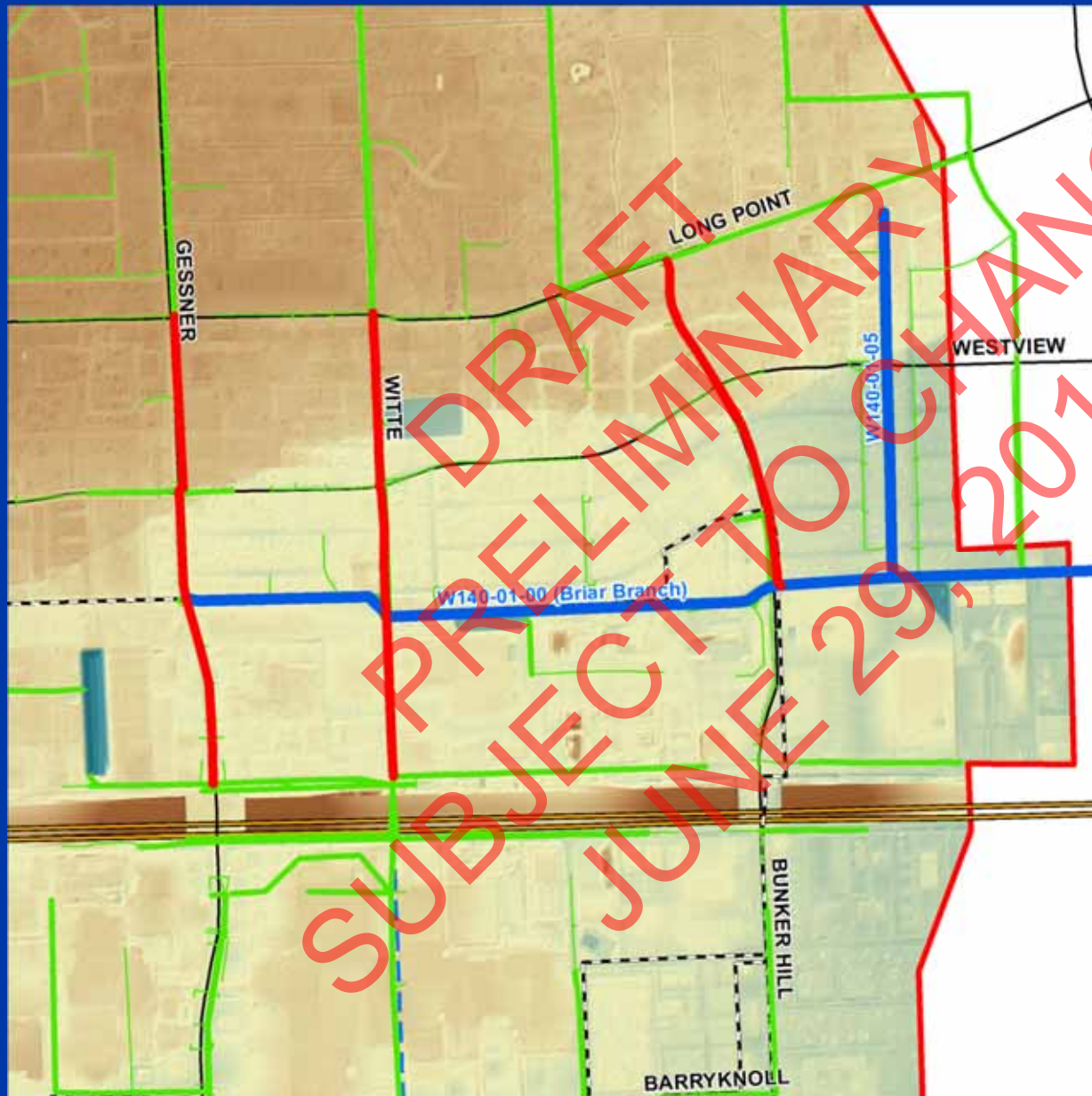
DRAFT  
PRELIMINARY  
SUBJECT TO CHANGE  
JUNE 29, 2011

6/29/2011



# W140-01-00 Major Infrastructure

W140-01-00  
Briar Branch



## Legend

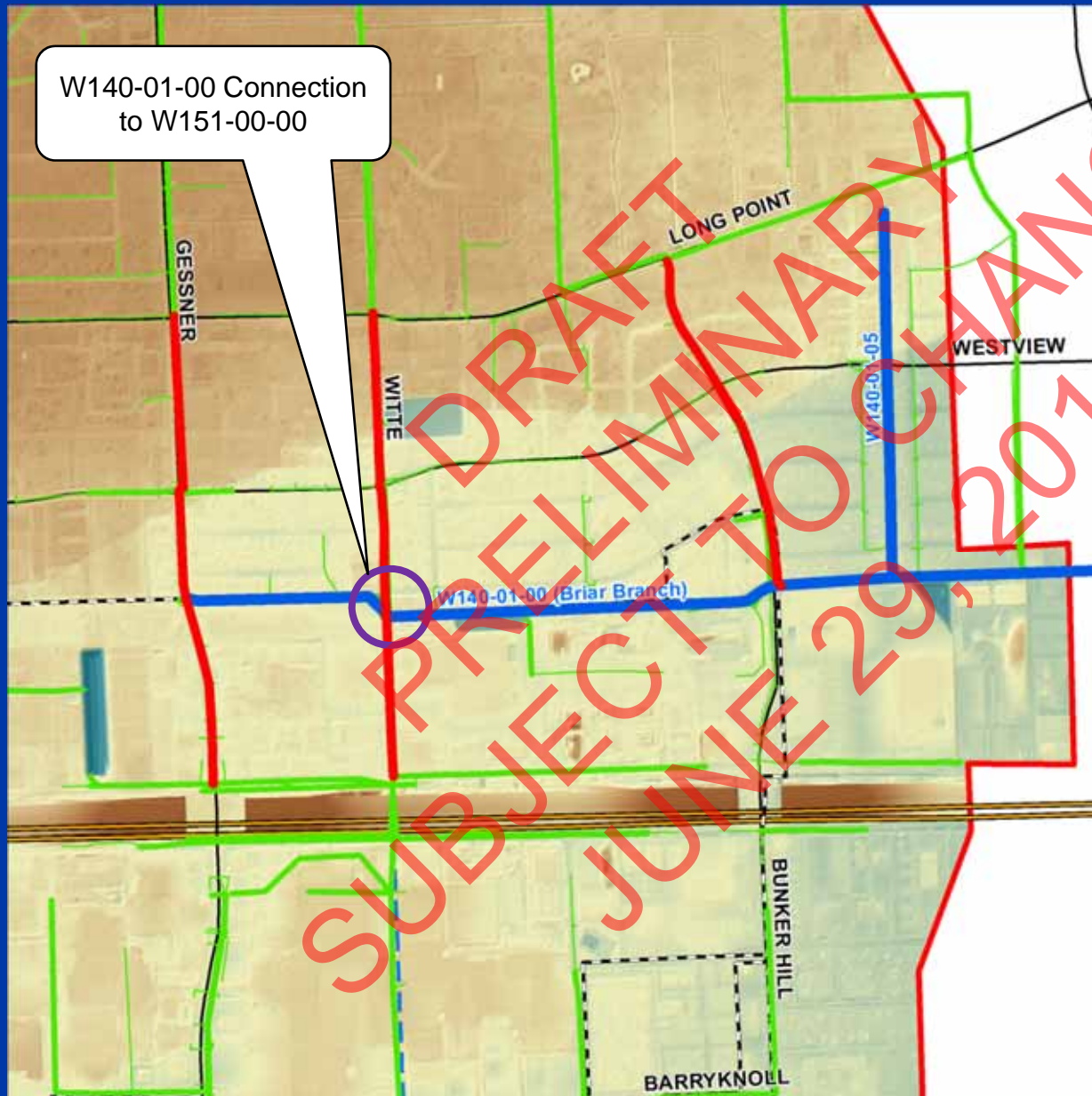
- TIRZ 17
- Storm Sewer
- HCFC Channels
- Depth of Ponding (ft)
  - <0.25
  - 0.25 - 0.50
  - 0.50 - 1.0
  - 1.0 - 2.0
  - 2.0 - 5.0
  - >5.0

6/29/2011



# W140-01-00 Major Infrastructure

W140-01-00  
Briar Branch



## Legend

- TIRZ 17
- Storm Sewer
- HCFCD Channels
- Depth of Ponding (ft)
  - <0.25
  - 0.25 - 0.50
  - 0.50 - 1.0
  - 1.0 - 2.0
  - 2.0 - 5.0
  - >5.0

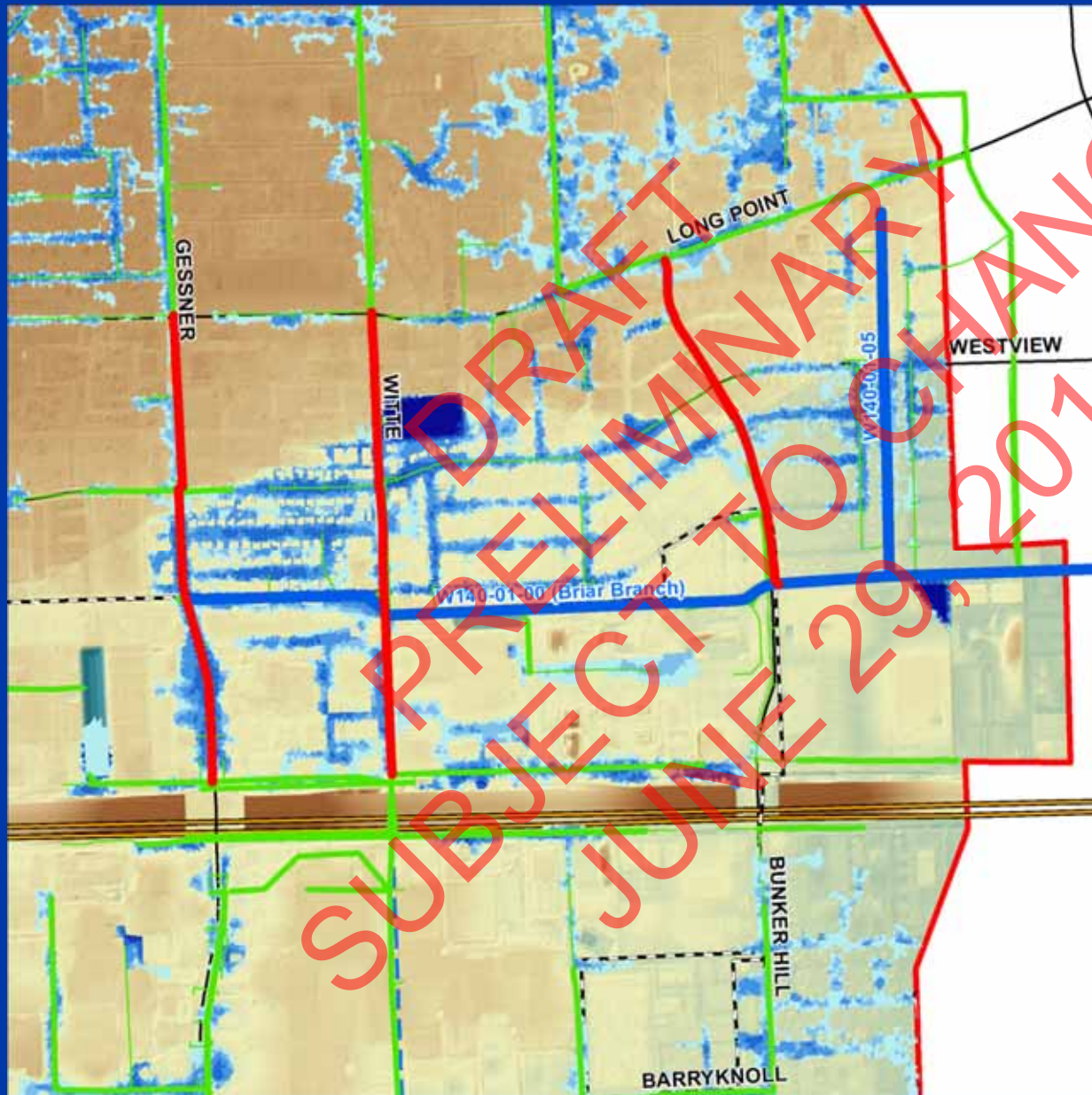
6/29/2011



# Existing Conditions

W140-01-00  
Briar Branch

10-Year 24-Hour  
Storm Event



## Legend

- TIRZ 17
- Storm Sewer
- HCFC Channels
- Depth of Ponding (ft)
  - <0.25
  - 0.25 - 0.50
  - 0.50 - 1.0
  - 1.0 - 2.0
  - 2.0 - 5.0
  - >5.0

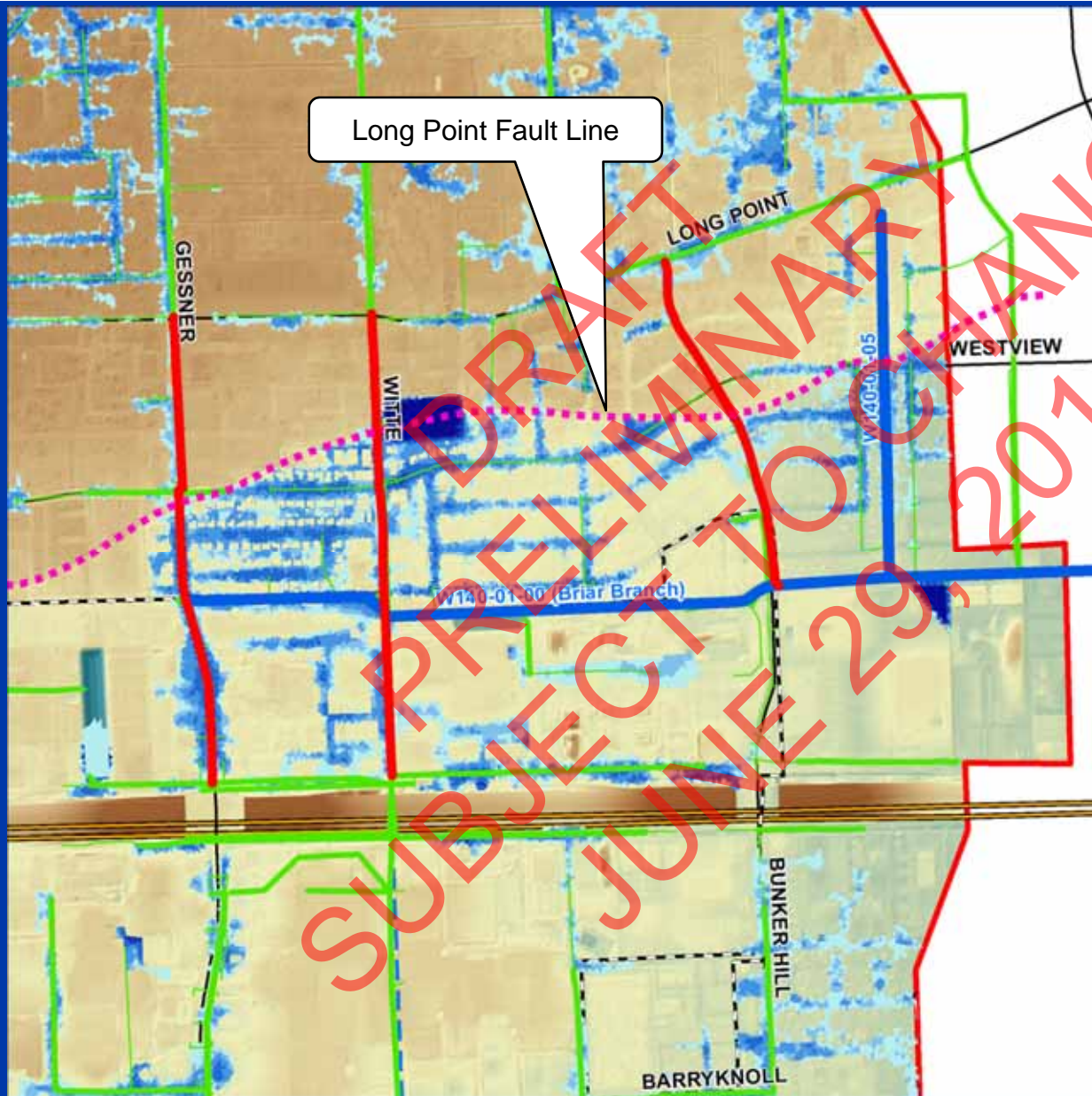
6/29/2011












# Existing Conditions

W140-01-00  
Briar Branch

10-Year 24-Hour  
Storm Event



## Legend

-  TIRZ 17
-  Storm Sewer
-  HCFC Channels
- Depth of Ponding (ft)
  -  <0.25
  -  0.25 - 0.50
  -  0.50 - 1.0
  -  1.0 - 2.0
  -  2.0 - 5.0
  -  >5.0

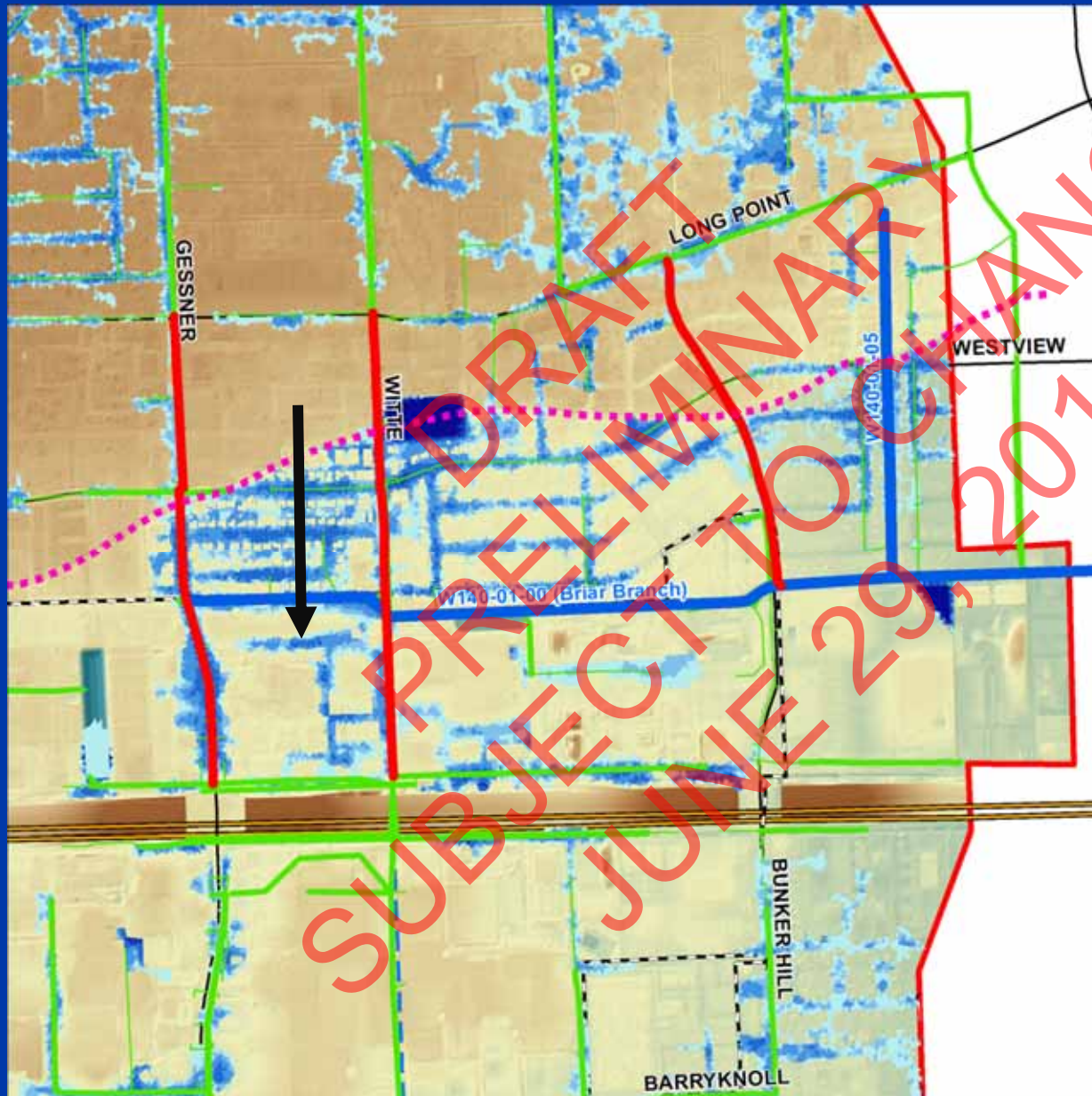
6/29/2011



# Existing Conditions

W140-01-00  
Briar Branch

10-Year 24-Hour  
Storm Event



## Legend

- TIRZ 17
- Storm Sewer
- HCFC Channels
- Depth of Ponding (ft)
  - <0.25
  - 0.25 - 0.50
  - 0.50 - 1.0
  - 1.0 - 2.0
  - 2.0 - 5.0
  - >5.0

6/29/2011

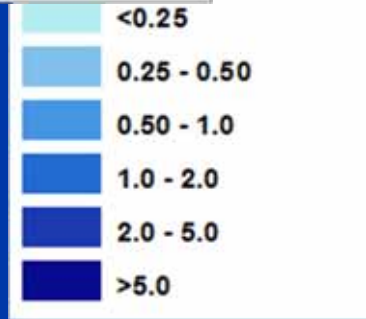




# Existing Conditions

W140-01-00  
Briar Branch

10-Year 24-Hour  
event



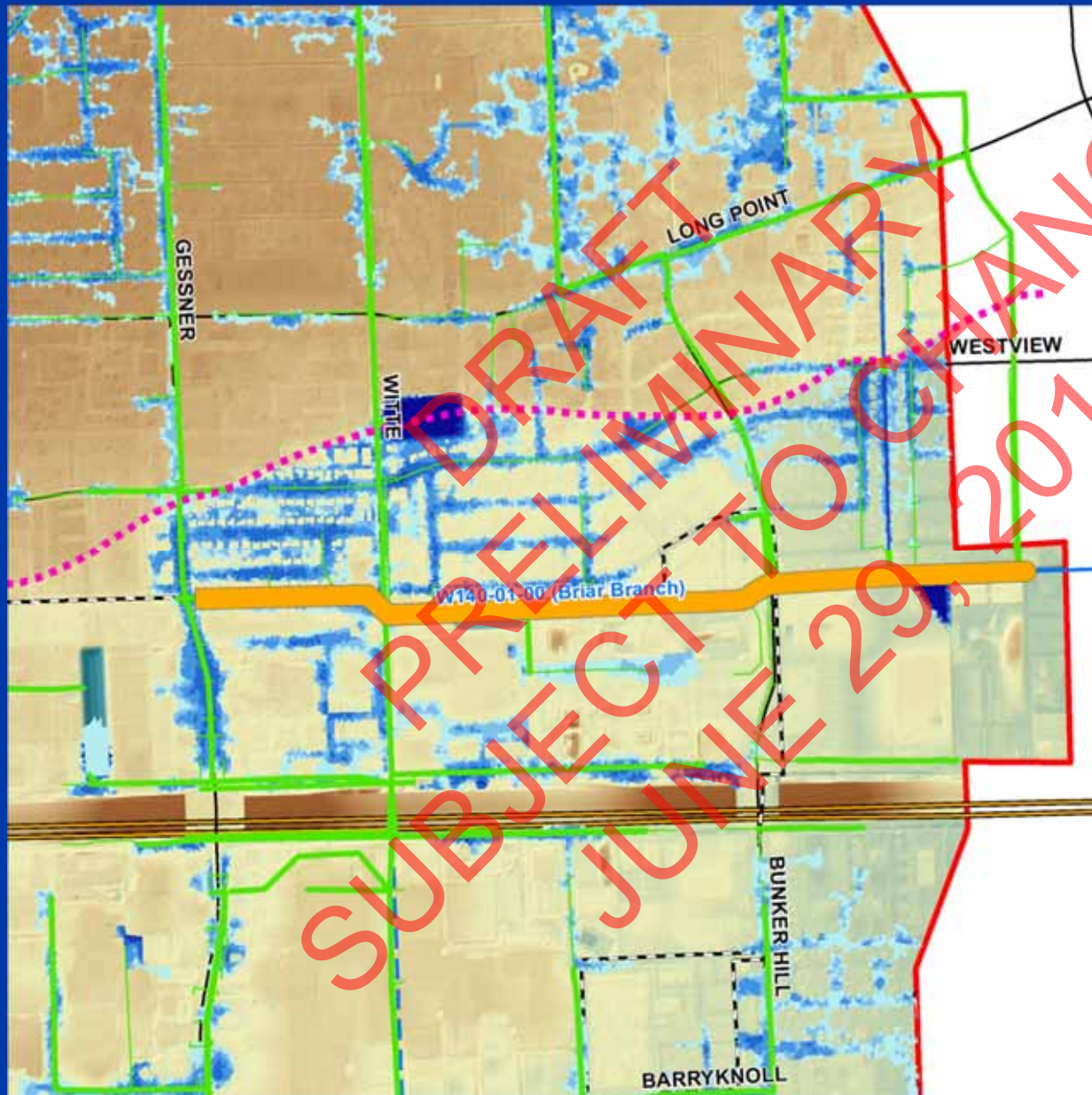
6/29/2011



# Briar Branch Channel Improvements

W140-01-00  
Briar Branch

10-Year 24-Hour  
Storm Event



## Legend

- TIRZ 17
- Storm Sewer
- HCFCD Channels
- TIRZ 17 Projects**
  - Standard Conveyance
  - Channel Improvements
  - Detention Locations
- Projects by Others**
  - Standard Conveyance
  - Channel Improvements
  - Detention Locations
- Depth of Ponding (ft)**
  - <0.25
  - 0.25 - 0.50
  - 0.50 - 1.0
  - 1.0 - 2.0
  - 2.0 - 5.0
  - >5.0
  - Existing Ponding Extent

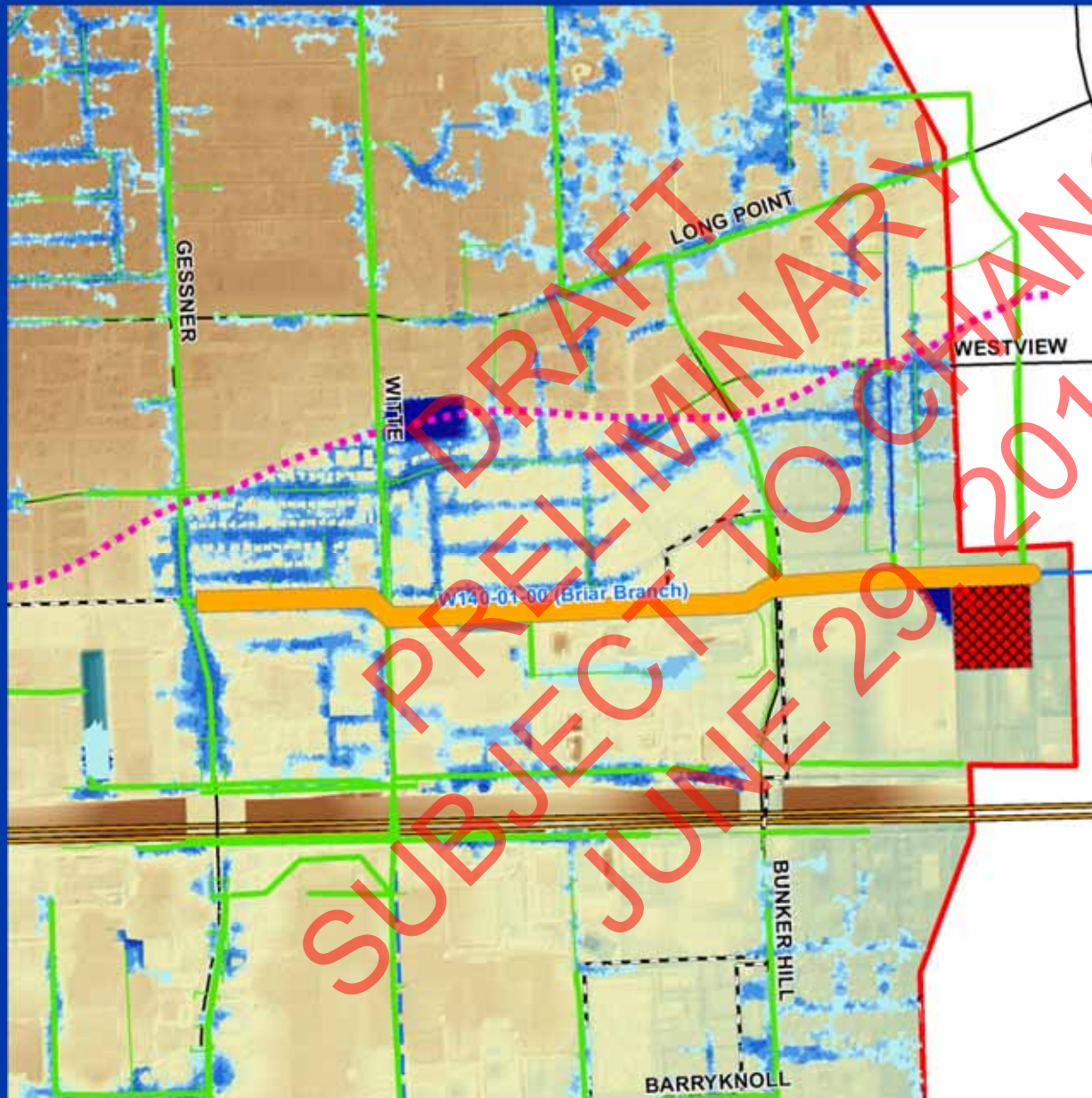
6/29/2011



# Briar Branch Detention

W140-01-00  
Briar Branch

10-Year 24-Hour  
Storm Event



## Legend

- TIRZ 17
- Storm Sewer
- HCFC Channels
- TIRZ 17 Projects**
  - Standard Conveyance
  - Channel Improvements
  - Detention Locations
- Projects by Others**
  - Standard Conveyance
  - Channel Improvements
  - Detention Locations
- Depth of Ponding (ft)**
  - <0.25
  - 0.25 - 0.50
  - 0.50 - 1.0
  - 1.0 - 2.0
  - 2.0 - 5.0
  - >5.0
- Existing Ponding Extent

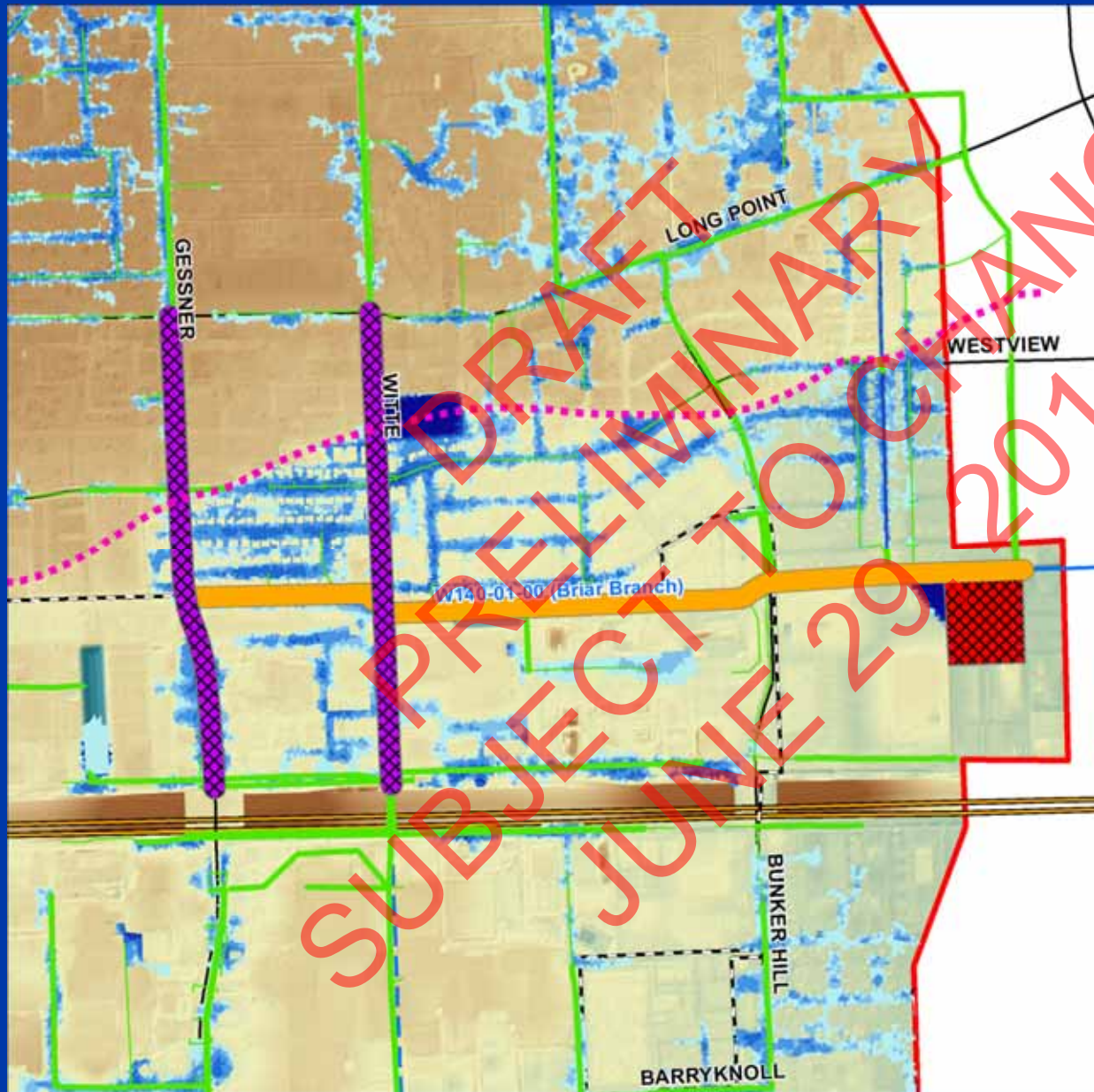
6/29/2011



# Gessner & Witte Improvements

W140-01-00  
Briar Branch

10-Year 24-Hour  
Storm Event



## Legend

- TIRZ 17
- Storm Sewer
- HCFCD Channels
- TIRZ 17 Projects**
  - Standard Conveyance
  - Channel Improvements
  - Detention Locations
- Projects by Others**
  - Standard Conveyance
  - Channel Improvements
  - Detention Locations
- Depth of Ponding (ft)**
  - <0.25
  - 0.25 - 0.50
  - 0.50 - 1.0
  - 1.0 - 2.0
  - 2.0 - 5.0
  - >5.0
- Existing Ponding Extent

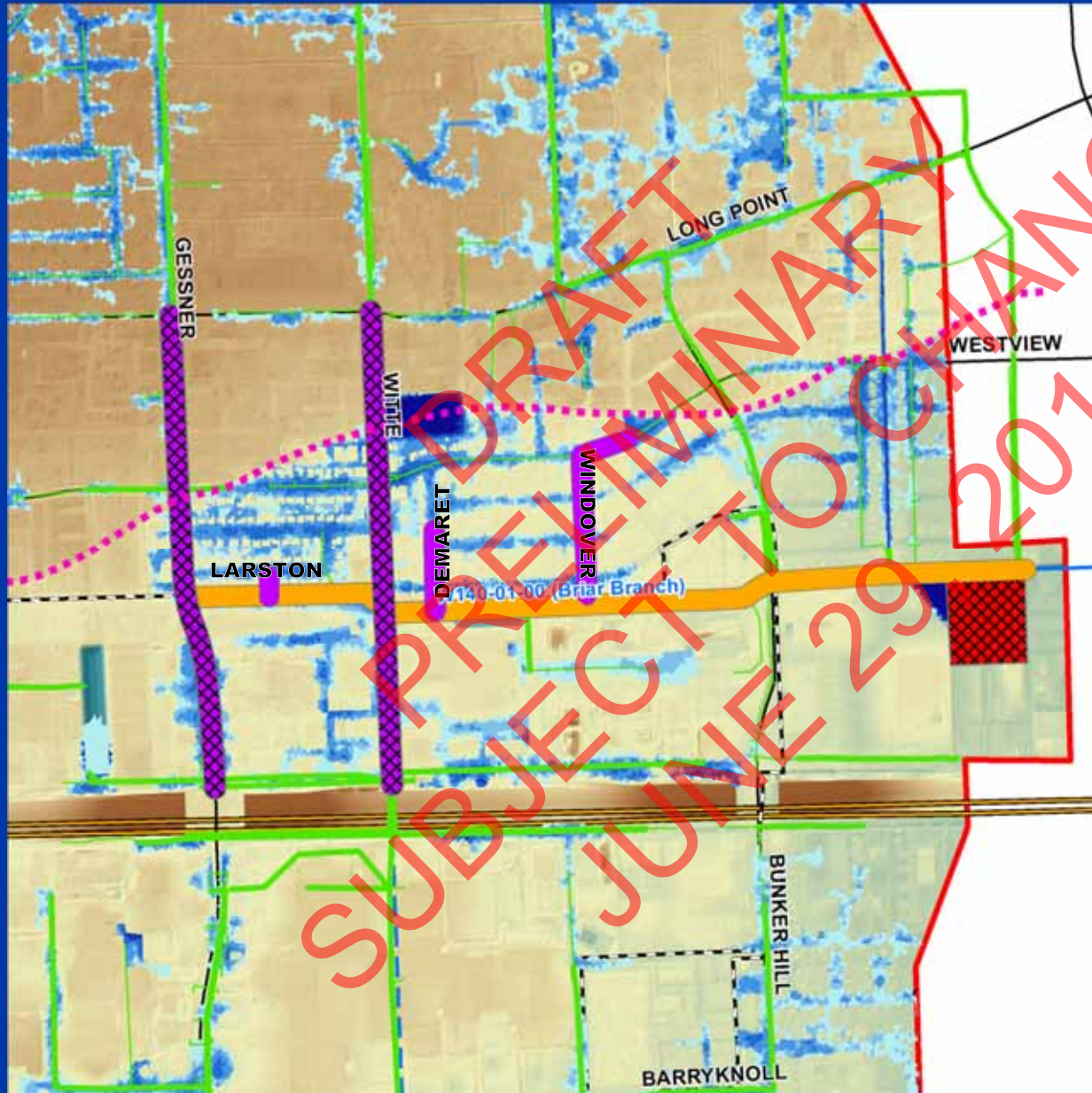
6/29/2011



# Windover, Demaret, & Larston Improvements

W140-01-00  
 Briar Branch

10-Year 24-Hour  
 Storm Event



## Legend

- TIRZ 17
- Storm Sewer
- HCFCD Channels
- TIRZ 17 Projects**
- Standard Conveyance
- Channel Improvements
- Detention Locations
- Projects by Others**
- Standard Conveyance
- Channel Improvements
- Detention Locations
- Depth of Ponding (ft)**
- <0.25
- 0.25 - 0.50
- 0.50 - 1.0
- 1.0 - 2.0
- 2.0 - 5.0
- >5.0
- Existing Ponding Extent

6/29/2011

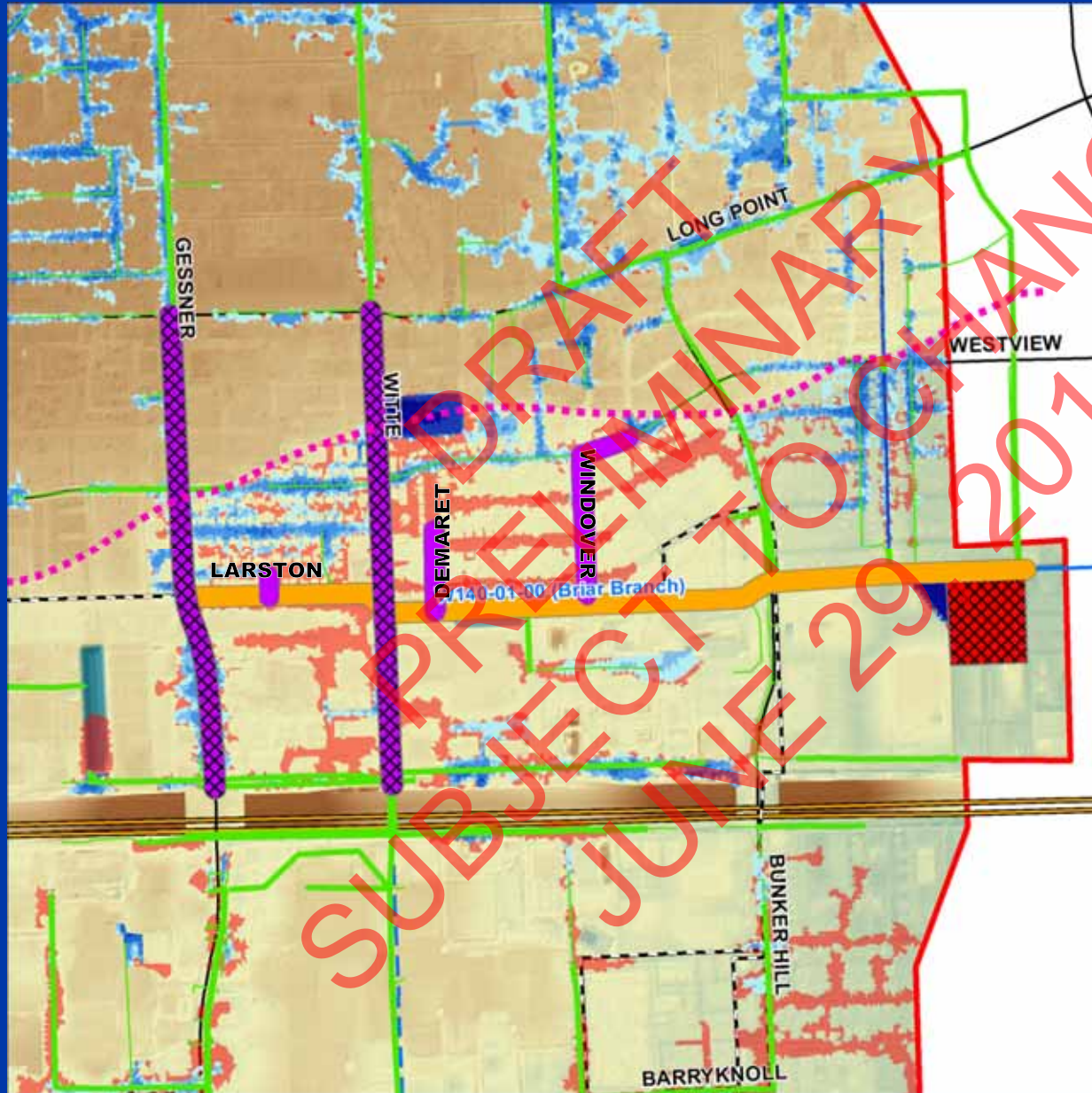


SUBJECT TO CHANGE  
 DRAFT  
 JUNE 29, 2011

# Proposed Conditions

W140-01-00  
 Briar Branch

10-Year 24-Hour  
 Storm Event



## Legend

- TIRZ 17
- Storm Sewer
- HCFCD Channels
- TIRZ 17 Projects**
- Standard Conveyance
- Channel Improvements
- Detention Locations
- Projects by Others**
- Standard Conveyance
- Channel Improvements
- Detention Locations
- Depth of Ponding (ft)**
- <0.25
- 0.25 - 0.50
- 0.50 - 1.0
- 1.0 - 2.0
- 2.0 - 5.0
- >5.0
- Existing Ponding Extent

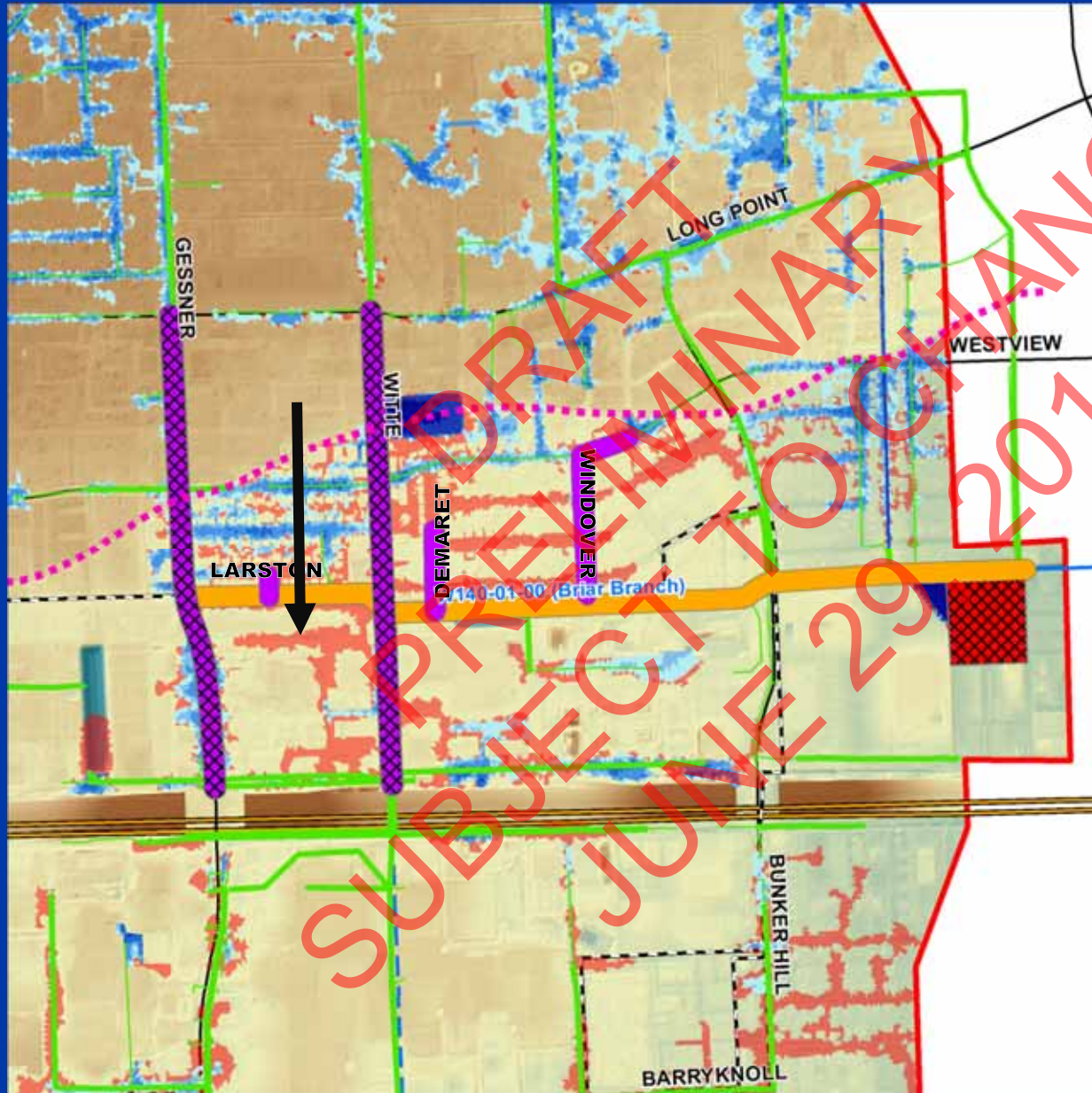
6/29/2011



# Proposed Conditions

W140-01-00  
 Briar Branch

10-Year 24-Hour  
 Storm Event



## Legend

- TIRZ 17
- Storm Sewer
- HCFCD Channels
- TIRZ 17 Projects**
- Standard Conveyance
- Channel Improvements
- Detention Locations
- Projects by Others**
- Standard Conveyance
- Channel Improvements
- Detention Locations
- Depth of Ponding (ft)**
- <0.25
- 0.25 - 0.50
- 0.50 - 1.0
- 1.0 - 2.0
- 2.0 - 5.0
- >5.0
- Existing Ponding Extent

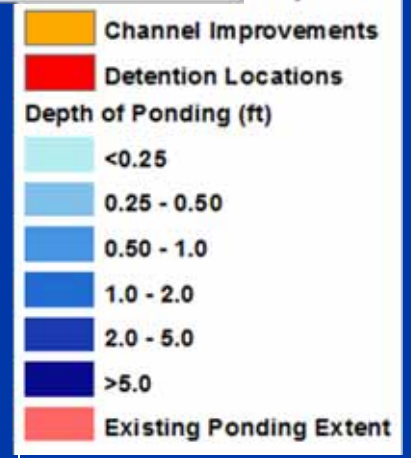
6/29/2011



# Proposed Conditions

W140-01-00  
 Briar Branch

10-Year 24-Hour  
 event



6/29/2011





# Briar Branch Improvements

W140-01-00  
Briar Branch

- Detention Maximizes 10yr Benefits of Proposed Conveyance Alternatives
- Direct Benefit to TIRZ 17 CIP Projects
  - Gessner/Witte
- Direct Benefit to Adjacent Communities
- Direct Benefit to W151 Watershed
- Indirect Benefit to W153 Watershed



Proposed  
Basin

6/29/2011



# Briar Branch Improvements

W140-01-00  
Briar Branch

- Detention Maximizes 10yr Benefits of Proposed Conveyance Alternatives
- Direct Benefit to TIRZ 17 CIP Projects
  - Gessner/Witte
- Direct Benefit to Adjacent Communities
- Direct Benefit to W151 Watershed
- Indirect Benefit to W153 Watershed



# 8-Acre Detention Basin

W140-01-00  
 Briar Branch



DRAFT / PRELIMINARY / SUBJECT TO CHANGE / JUNE 29, 2011

**Proposed  
 Detention Pond  
 Data**

**Approx. Site Area  
 = 8 acres**

**Approx. Volume  
 = 40-44 ac-ft**

6/29/2011

**BRIAR BRANCH W140-01-00**



**CLARK CONDON  
 ASSOCIATES**  
 LANDSCAPE ARCHITECTURE

HCFCO DETENTION POND  
 Landscape Improvements  
 March 22, 2011  
 Houston, Texas

10000 Dallas Loop West • Houston, Texas 77063  
 713.869.6900 • Fax 713.869.6988  
 www.clarkcondon.com



# 8-Acre Detention Basin

W140-01-00  
Briar Branch



DRAFT  
PRELIMINARY  
SUBJECT TO CHANGE  
JUNE 29, 2011

6/29/2011



# 8-Acre Detention Basin

W140-01-00  
Briar Branch



DRAFT  
PRELIMINARY  
SUBJECT TO CHANGE  
JUNE 29, 2011

6/29/2011



# Presentation Outline

- TIRZ 17 RDS Background
- W140-01-00 Briar Branch
- **W151-00-00**
- W153-00-00
- Summary

DRAFT  
PRELIMINARY  
SUBJECT TO CHANGE  
JUNE 29, 2011

6/29/2011



# W151-00-00 Major Infrastructure

W151-00-00



## Legend

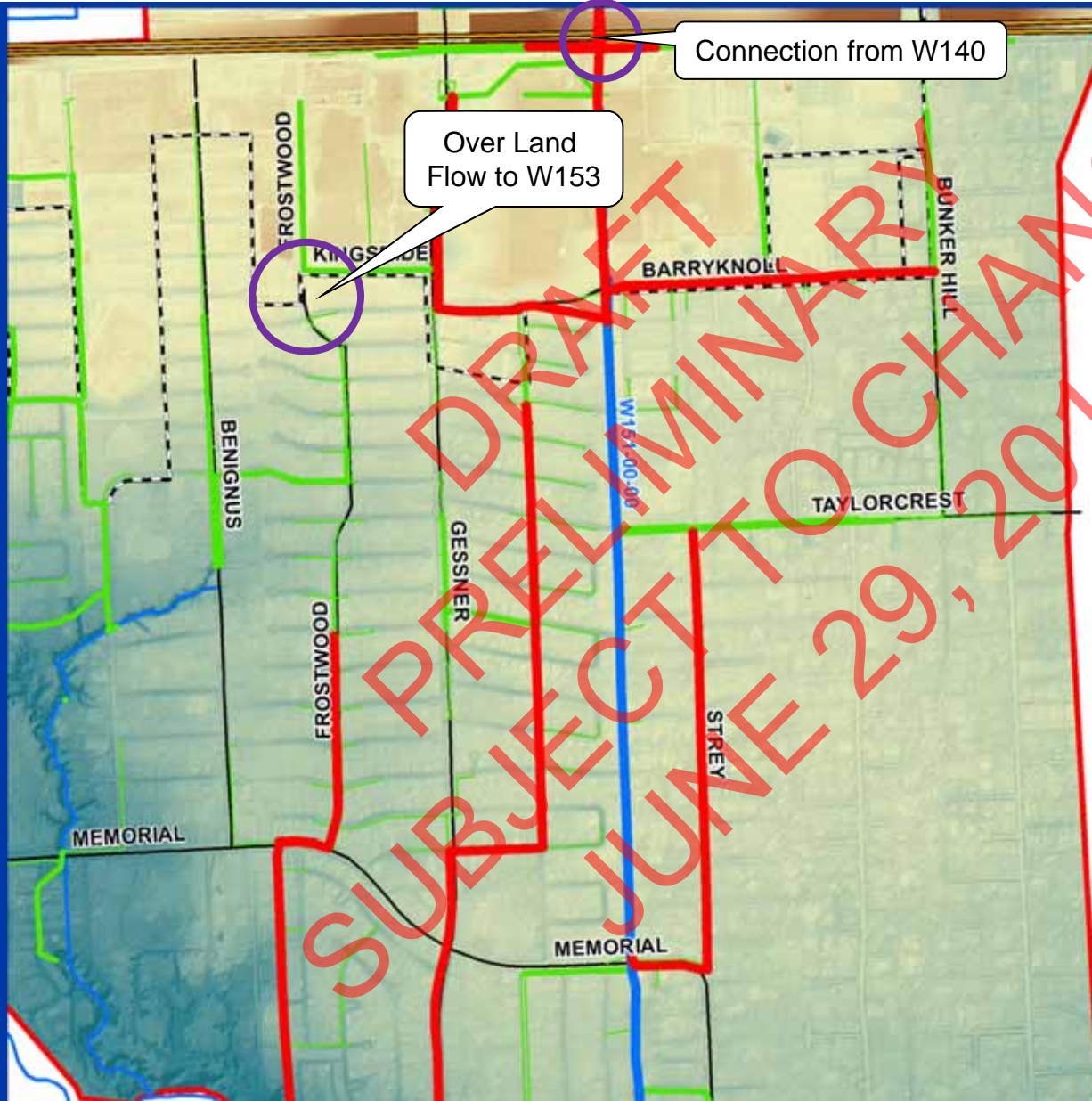
- TIRZ 17
- Storm Sewer
- HCFC Channels
- Depth of Ponding (ft)
  - <0.25
  - 0.25 - 0.50
  - 0.50 - 1.0
  - 1.0 - 2.0
  - 2.0 - 5.0
  - >5.0

6/29/2011












# W151-00-00 Major Infrastructure

W151-00-00



## Legend

-  TIRZ 17
-  Storm Sewer
-  HCFCD Channels
- Depth of Ponding (ft)
  -  <0.25
  -  0.25 - 0.50
  -  0.50 - 1.0
  -  1.0 - 2.0
  -  2.0 - 5.0
  -  >5.0

6/29/2011





# Existing Conditions

W151-00-00

10-Year 24-Hour  
Storm Event



## Legend

- TIRZ 17
- Storm Sewer
- HCFC Channels
- Depth of Ponding (ft)
  - <0.25
  - 0.25 - 0.50
  - 0.50 - 1.0
  - 1.0 - 2.0
  - 2.0 - 5.0
  - >5.0

6/29/2011



# Existing Conditions

W151-00-00

10-Year 24-Hour  
Storm Event



## Legend

- TIRZ 17
- Storm Sewer
- HCFC Channels
- Depth of Ponding (ft)
  - <0.25
  - 0.25 - 0.50
  - 0.50 - 1.0
  - 1.0 - 2.0
  - 2.0 - 5.0
  - >5.0

6/29/2011



# Existing Conditions

W151-00-00

10-Year 24-Hour Storm Event



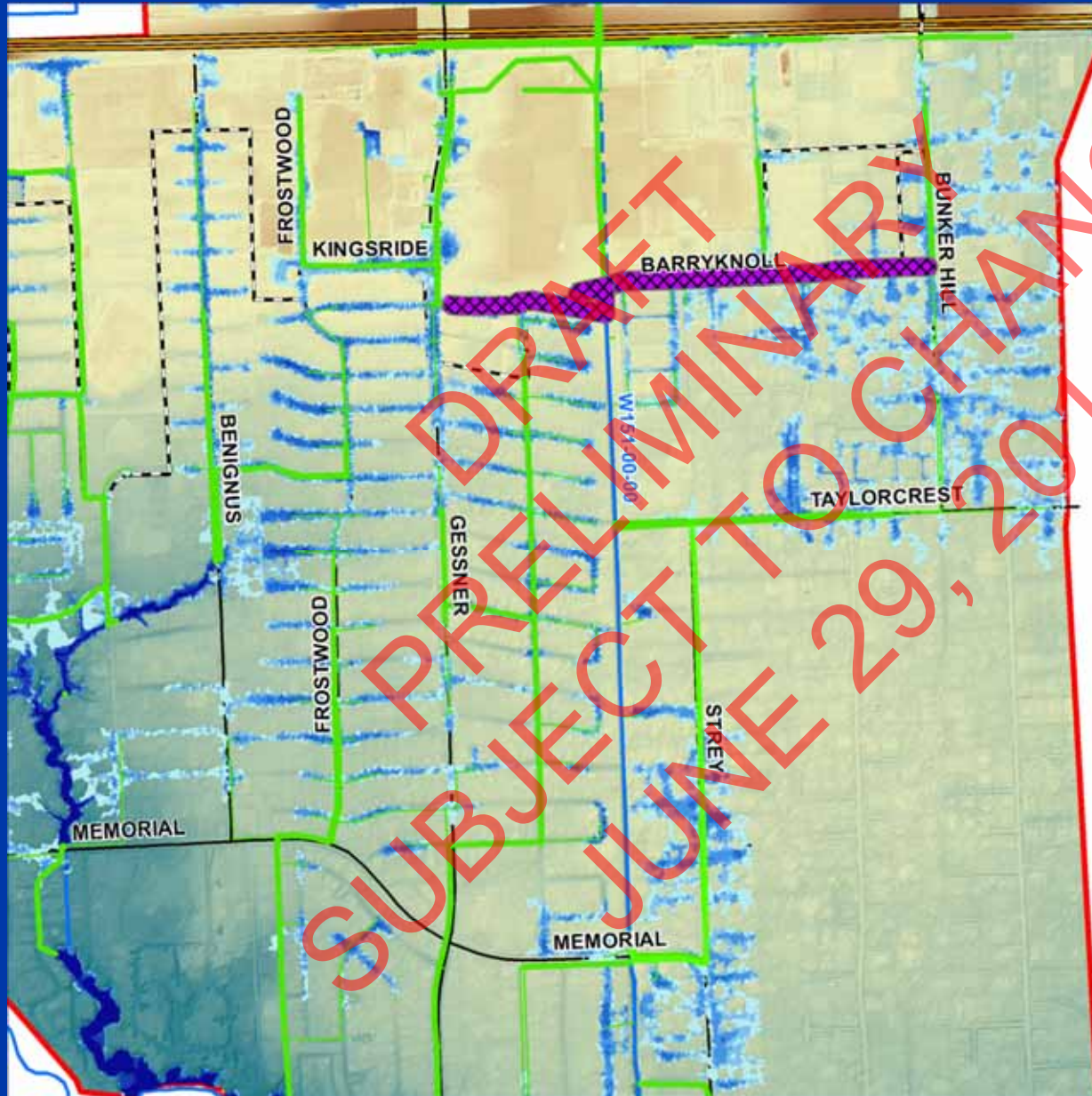
### Legend

- TIRZ 17
- Storm Sewer
- HCFCD Channels



# Barryknoll Improvements

W151-00-00



10-Year 24-Hour Storm Event

### Legend

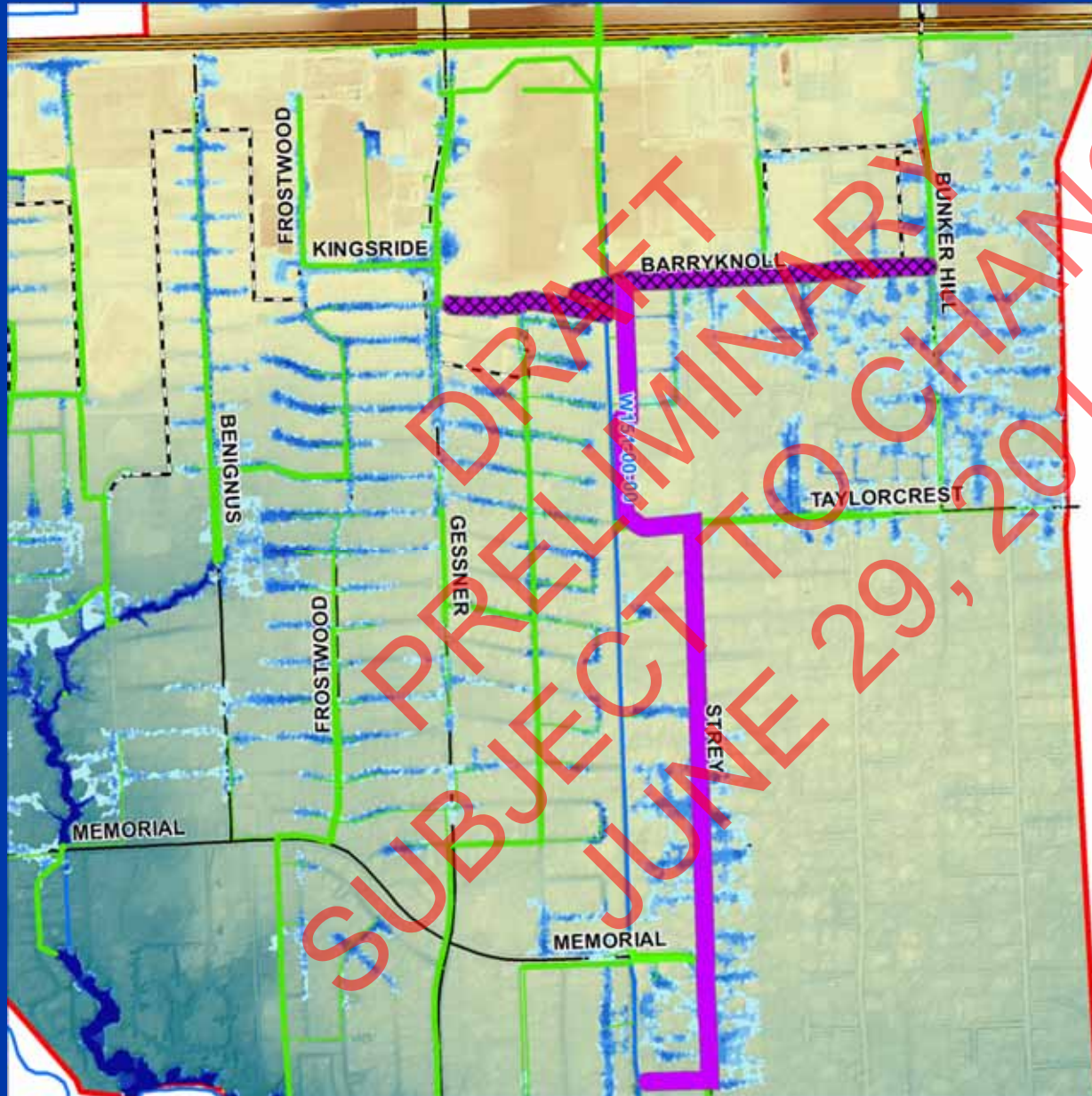
- TIRZ 17
- Storm Sewer
- HCFCD Channels
- TIRZ 17 Projects**
  - Standard Conveyance
  - Channel Improvements
  - Detention Locations
- Projects by Others**
  - Standard Conveyance
  - Channel Improvements
  - Detention Locations
- Depth of Ponding (ft)**
  - <0.25
  - 0.25 - 0.50
  - 0.50 - 1.0
  - 1.0 - 2.0
  - 2.0 - 5.0
  - >5.0
  - Existing Ponding Extent

6/29/2011



# Strey Lane Improvements

W151-00-00



10-Year 24-Hour Storm Event

### Legend

- TIRZ 17
- Storm Sewer
- HCFCD Channels
- TIRZ 17 Projects**
- Standard Conveyance
- Channel Improvements
- Detention Locations
- Projects by Others**
- Standard Conveyance
- Channel Improvements
- Detention Locations
- Depth of Ponding (ft)**
- <0.25
- 0.25 - 0.50
- 0.50 - 1.0
- 1.0 - 2.0
- 2.0 - 5.0
- >5.0
- Existing Ponding Extent

6/29/2011



# Kingsride & Frostwood Improvements

W151-00-00

10-Year 24-Hour Storm Event



## Legend

- TIRZ 17
- Storm Sewer
- HCFCD Channels
- TIRZ 17 Projects**
- Standard Conveyance
- Channel Improvements
- Detention Locations
- Projects by Others**
- Standard Conveyance
- Channel Improvements
- Detention Locations
- Depth of Ponding (ft)**
- <0.25
- 0.25 - 0.50
- 0.50 - 1.0
- 1.0 - 2.0
- 2.0 - 5.0
- >5.0
- Existing Ponding Extent

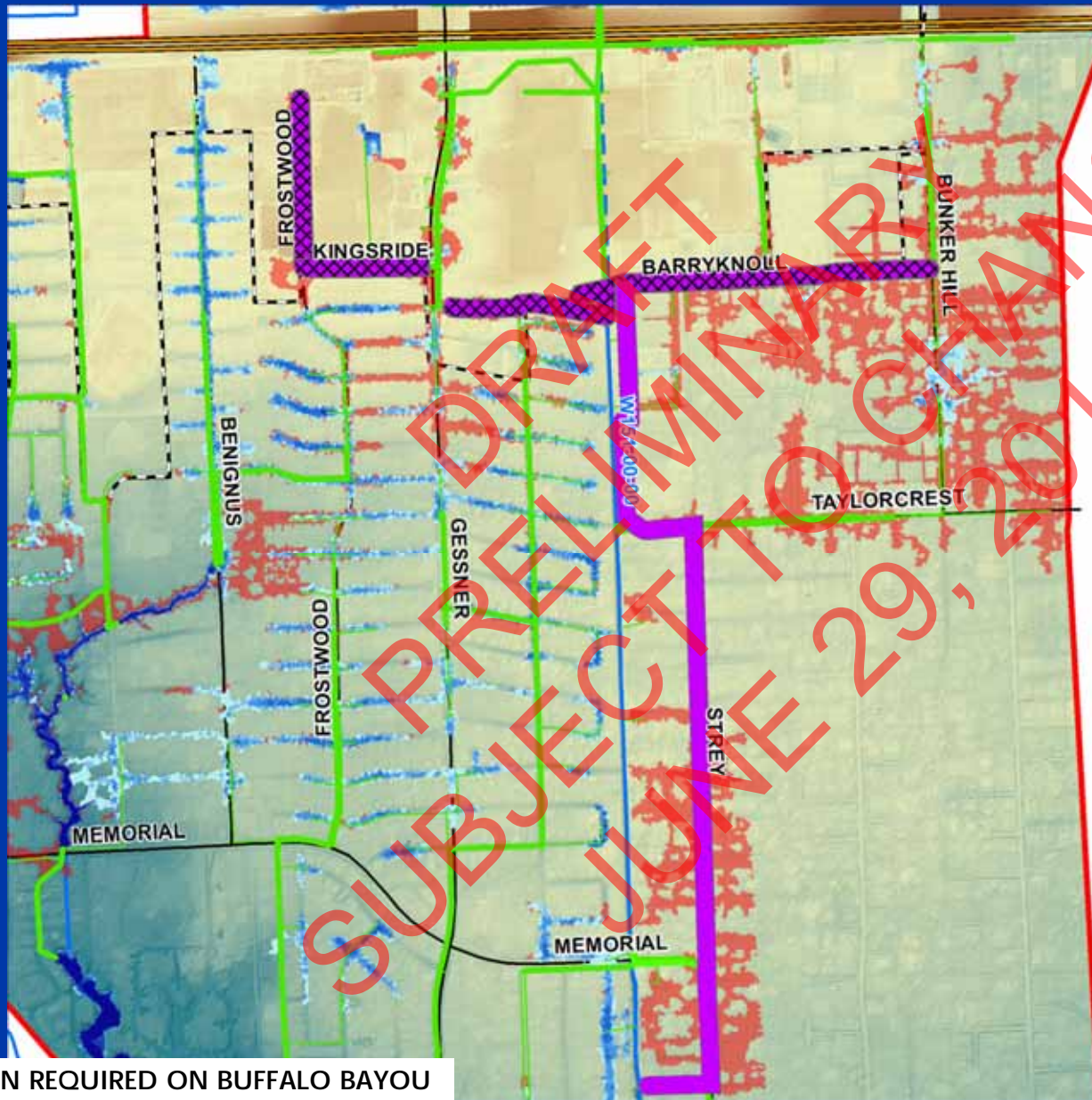
6/29/2011



# Proposed Conditions

W151-00-00

10-Year 24-Hour Storm Event



## Legend

- TIRZ 17
- Storm Sewer
- HCFCD Channels
- TIRZ 17 Projects
  - Standard Conveyance
  - Channel Improvements
  - Detention Locations
- Projects by Others
  - Standard Conveyance
  - Channel Improvements
  - Detention Locations
- Depth of Ponding (ft)
  - <0.25
  - 0.25 - 0.50
  - 0.50 - 1.0
  - 1.0 - 2.0
  - 2.0 - 5.0
  - >5.0
  - Existing Ponding Extent

6/29/2011

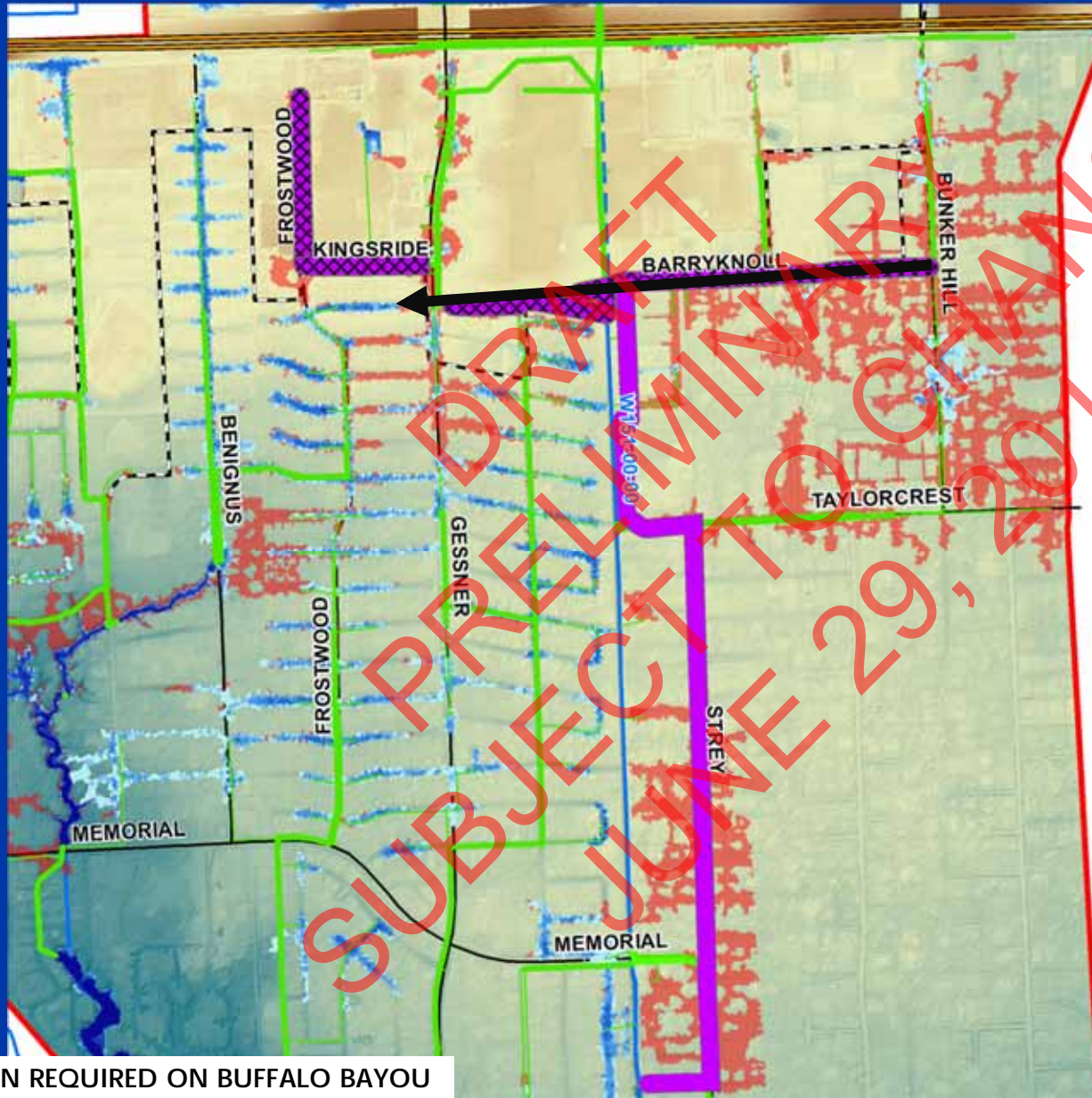


DETENTION REQUIRED ON BUFFALO BAYOU

# Proposed Conditions

W151-00-00

10-Year 24-Hour Storm Event



## Legend

- TIRZ 17
- Storm Sewer
- HCFCD Channels
- TIRZ 17 Projects**
- Standard Conveyance
- Channel Improvements
- Detention Locations
- Projects by Others**
- Standard Conveyance
- Channel Improvements
- Detention Locations
- Depth of Ponding (ft)**
- <0.25
- 0.25 - 0.50
- 0.50 - 1.0
- 1.0 - 2.0
- 2.0 - 5.0
- >5.0
- Existing Ponding Extent

6/29/2011



DETENTION REQUIRED ON BUFFALO BAYOU



# Proposed Conditions

W151-00-00

10-Year 24-Hour Storm Event



## Legend

- TIRZ 17
- Storm Sewer
- HCFCD Channels
- TIRZ 17 Projects
  - Standard Conveyance
  - Channel Improvements
  - Detention Locations
- Projects by Others



DETENTION REQUIRED ON BUFFALO BAYOU



# Presentation Outline

- TIRZ 17 RDS Background
- W140-01-00 Briar Branch
- W151-00-00
- **W153-00-00**
- Summary

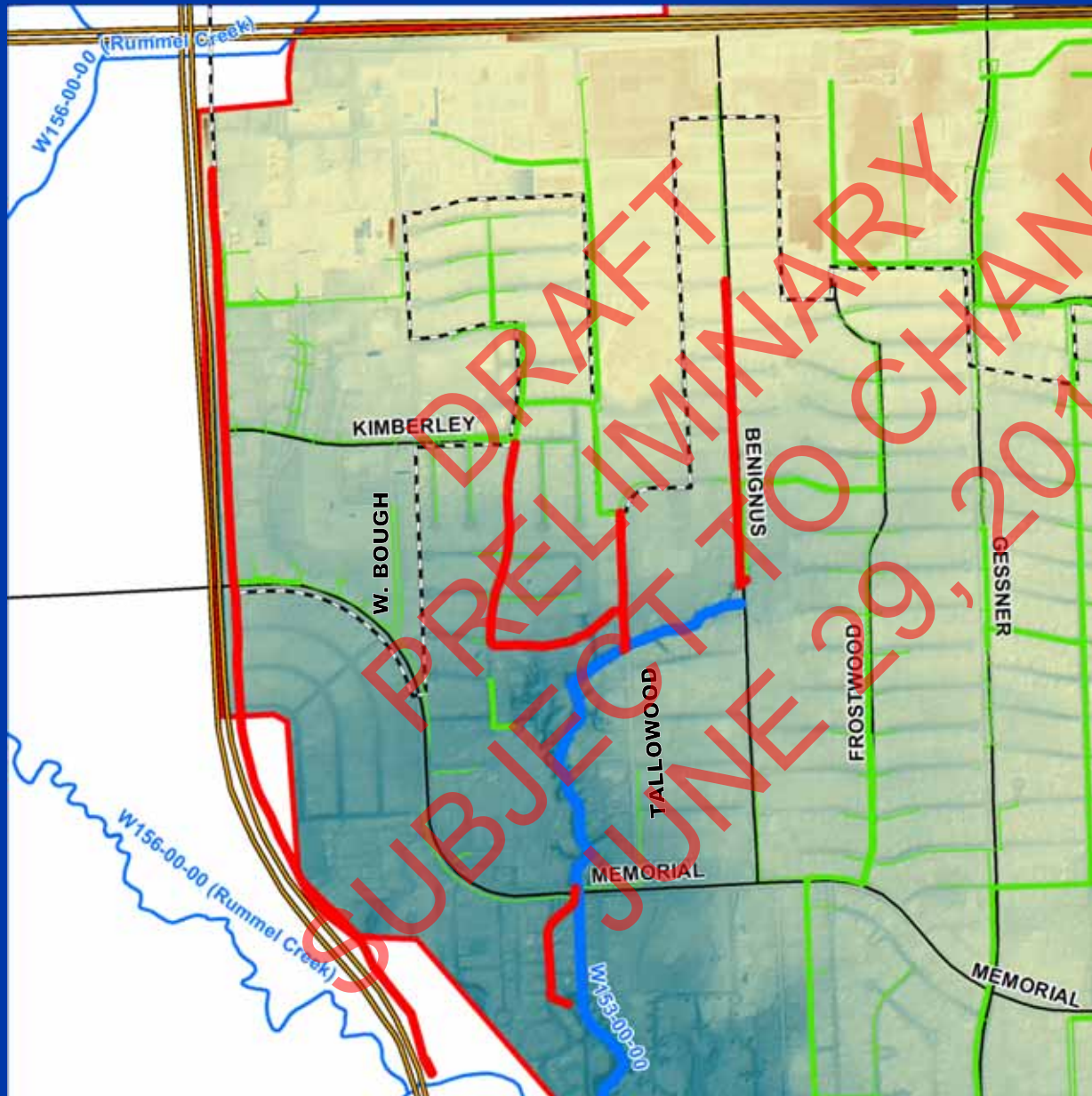
DRAFT  
PRELIMINARY  
SUBJECT TO CHANGE  
JUNE 29, 2011

6/29/2011



# W153-00-00 Major Infrastructure

W153-00-00



## Legend

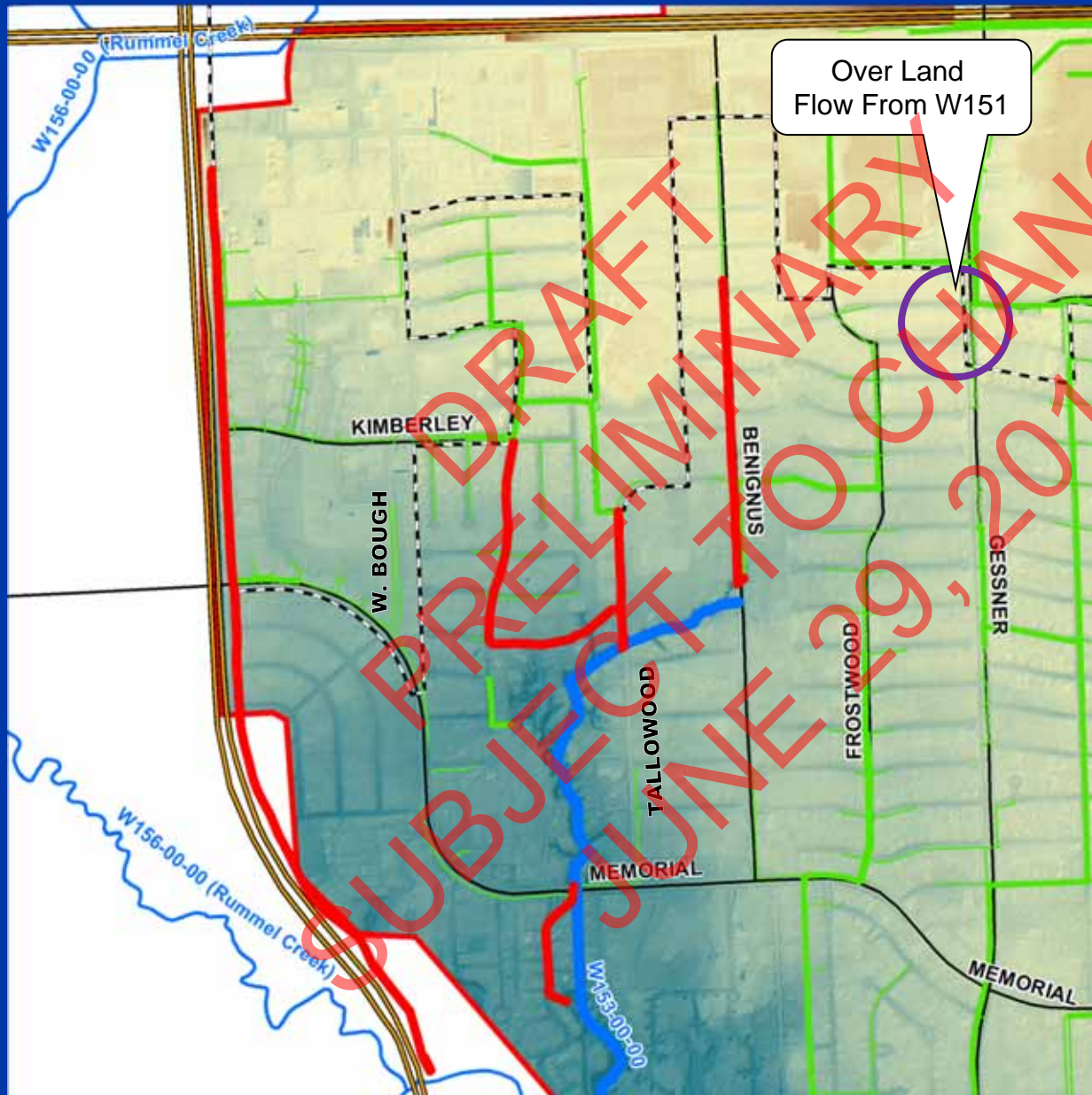
- TIRZ 17
- Storm Sewer
- HCFC Channels
- Depth of Ponding (ft)
  - <0.25
  - 0.25 - 0.50
  - 0.50 - 1.0
  - 1.0 - 2.0
  - 2.0 - 5.0
  - >5.0

6/29/2011



# W153-00-00 Major Infrastructure

W153-00-00



## Legend

- TIRZ 17
- Storm Sewer
- HCFCD Channels
- Depth of Ponding (ft)
  - <0.25
  - 0.25 - 0.50
  - 0.50 - 1.0
  - 1.0 - 2.0
  - 2.0 - 5.0
  - >5.0

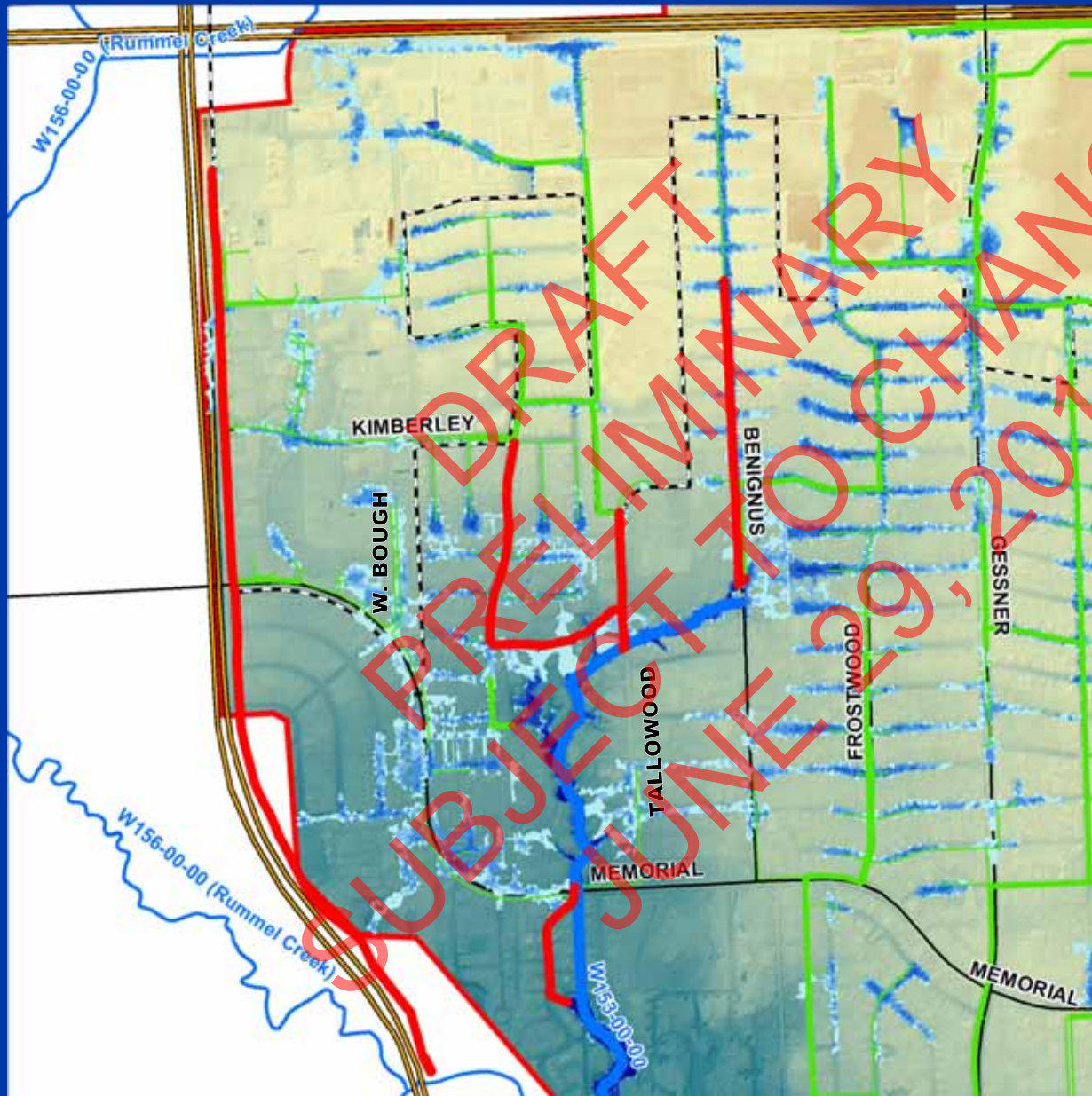
6/29/2011



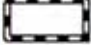




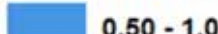



# Existing Conditions

W153-00-00

10-Year 24-Hour  
Storm Event



## Legend

-  TIRZ 17
-  Storm Sewer
-  HCFC Channels
- Depth of Ponding (ft)
  -  <0.25
  -  0.25 - 0.50
  -  0.50 - 1.0
  -  1.0 - 2.0
  -  2.0 - 5.0
  -  >5.0

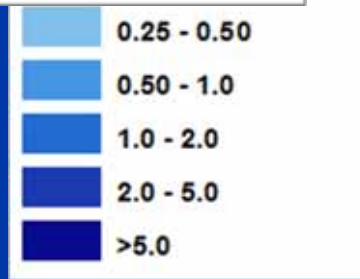
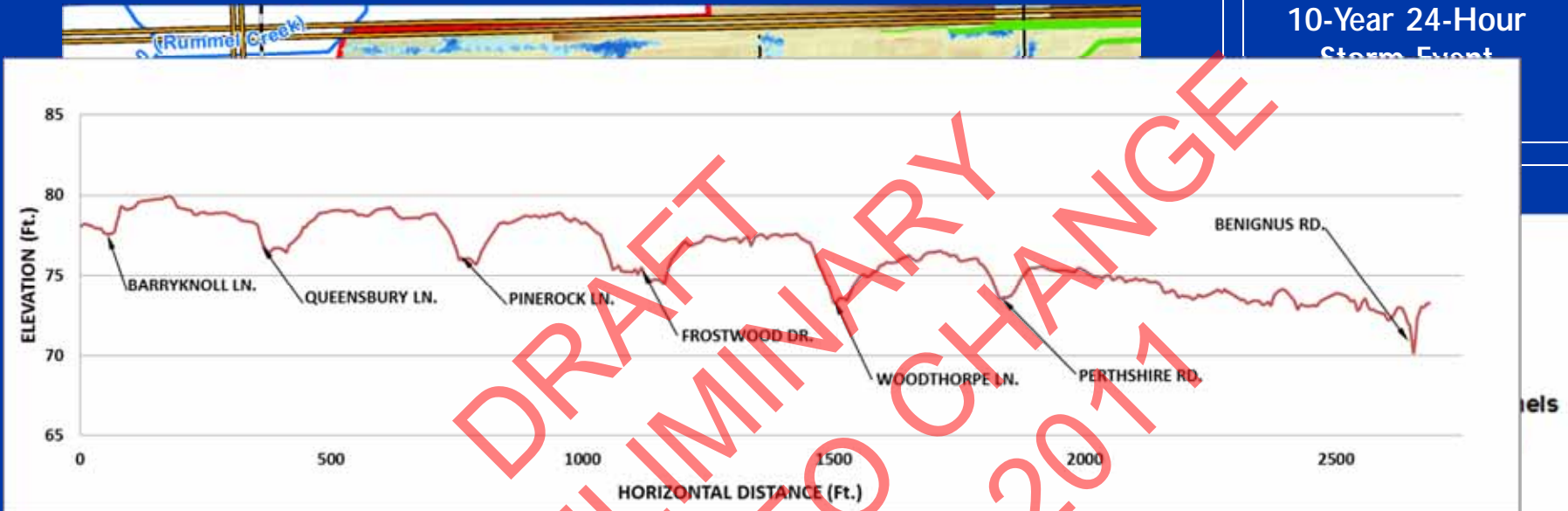
6/29/2011



# Existing Conditions

W153-00-00

10-Year 24-Hour Storm Event



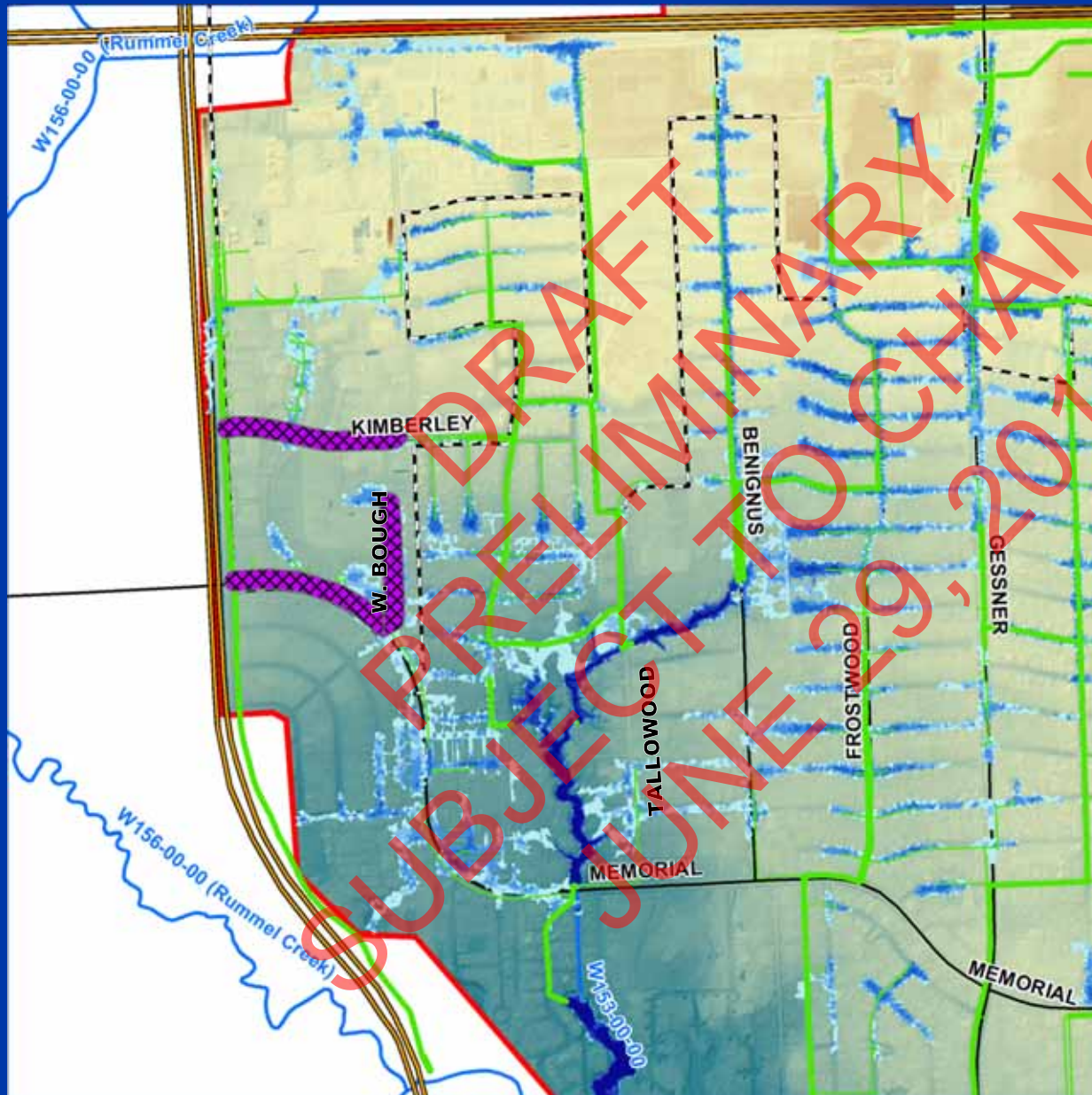
6/29/2011



















# Kimberley, Memorial West & West Bough Improvements

W153-00-00

10-Year 24-Hour Storm Event



## Legend

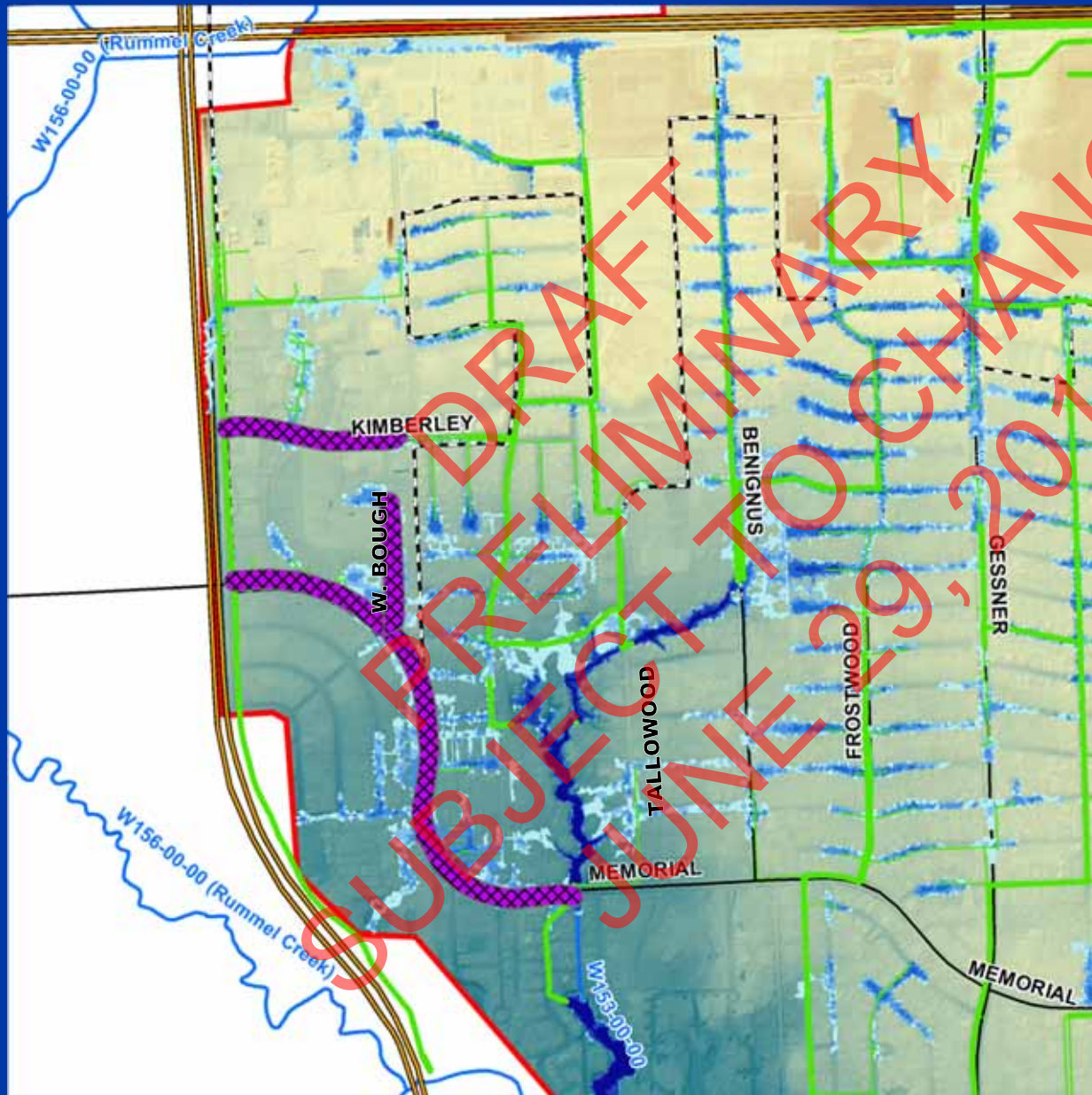
-  TIRZ 17
-  Storm Sewer
-  HCFCD Channels
- TIRZ 17 Projects**
-  Standard Conveyance
-  Channel Improvements
-  Detention Locations
- Projects by Others**
-  Standard Conveyance
-  Channel Improvements
-  Detention Locations
- Depth of Ponding (ft)**
-  <0.25
-  0.25 - 0.50
-  0.50 - 1.0
-  1.0 - 2.0
-  2.0 - 5.0
-  >5.0
-  Existing Ponding Extent

6/29/2011



# Memorial South/East Improvements

W153-00-00



10-Year 24-Hour Storm Event

## Legend

- TIRZ 17
- Storm Sewer
- HCFCD Channels
- TIRZ 17 Projects**
  - Standard Conveyance
  - Channel Improvements
  - Detention Locations
- Projects by Others**
  - Standard Conveyance
  - Channel Improvements
  - Detention Locations
- Depth of Ponding (ft)**
  - <0.25
  - 0.25 - 0.50
  - 0.50 - 1.0
  - 1.0 - 2.0
  - 2.0 - 5.0
  - >5.0
  - Existing Ponding Extent

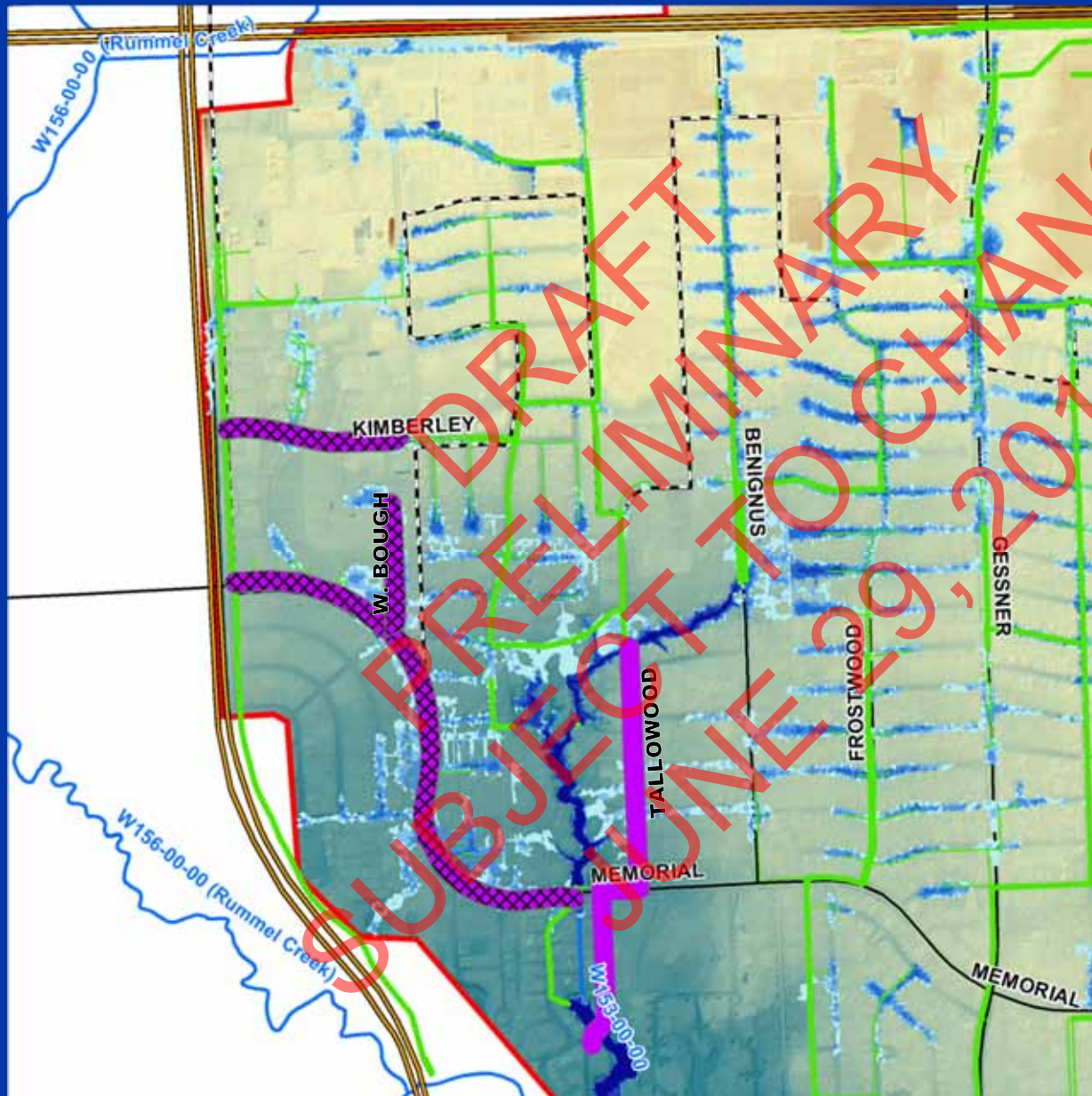
6/29/2011





# Tallowood Improvements

W153-00-00



10-Year 24-Hour Storm Event

## Legend

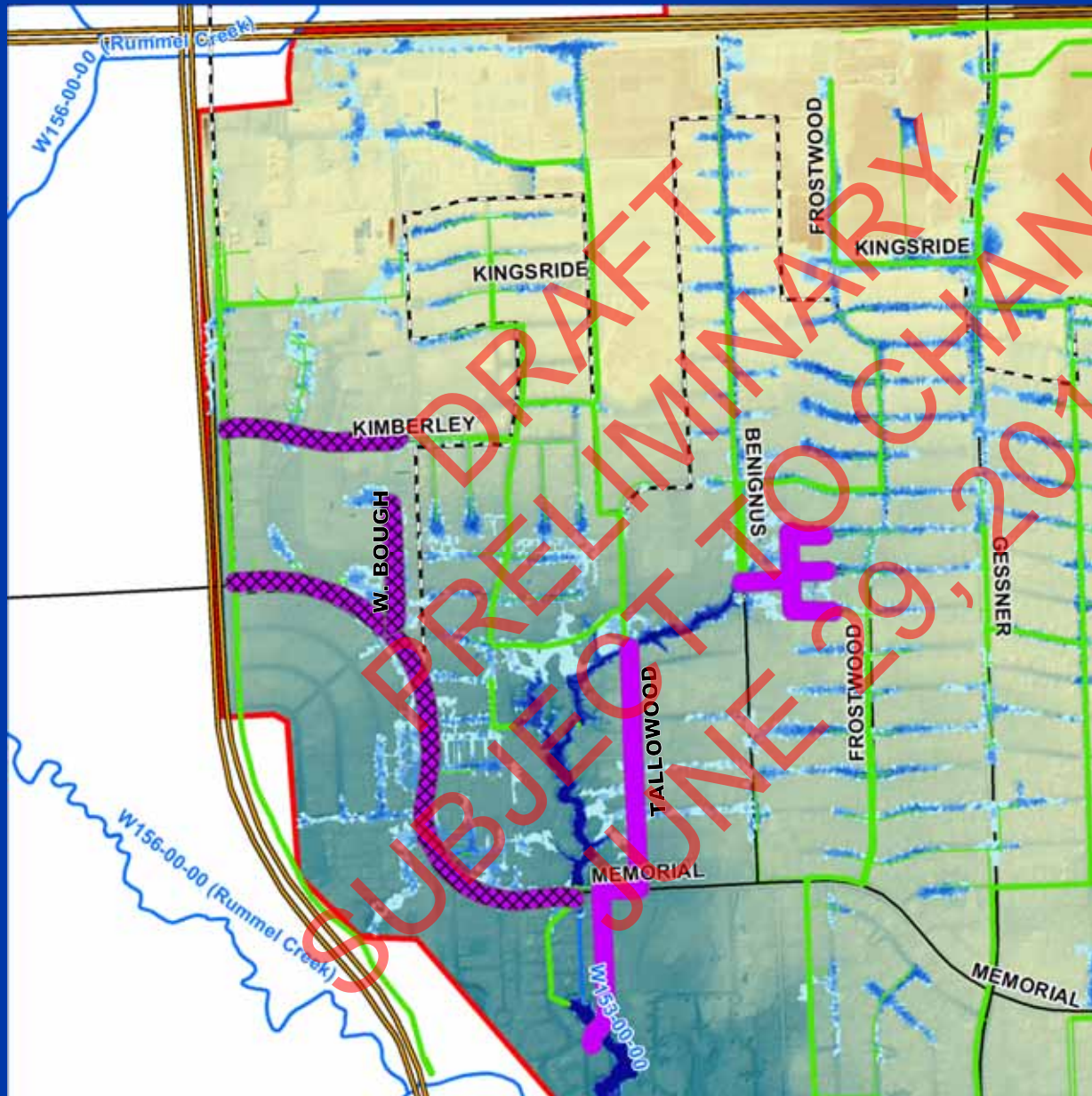
- TIRZ 17
- Storm Sewer
- HCFCD Channels
- TIRZ 17 Projects**
  - Standard Conveyance
  - Channel Improvements
  - Detention Locations
- Projects by Others**
  - Standard Conveyance
  - Channel Improvements
  - Detention Locations
- Depth of Ponding (ft)**
  - <0.25
  - 0.25 - 0.50
  - 0.50 - 1.0
  - 1.0 - 2.0
  - 2.0 - 5.0
  - >5.0
  - Existing Ponding Extent

6/29/2011



# W153 Conveyance Improvements

W153-00-00



10-Year 24-Hour Storm Event

## Legend

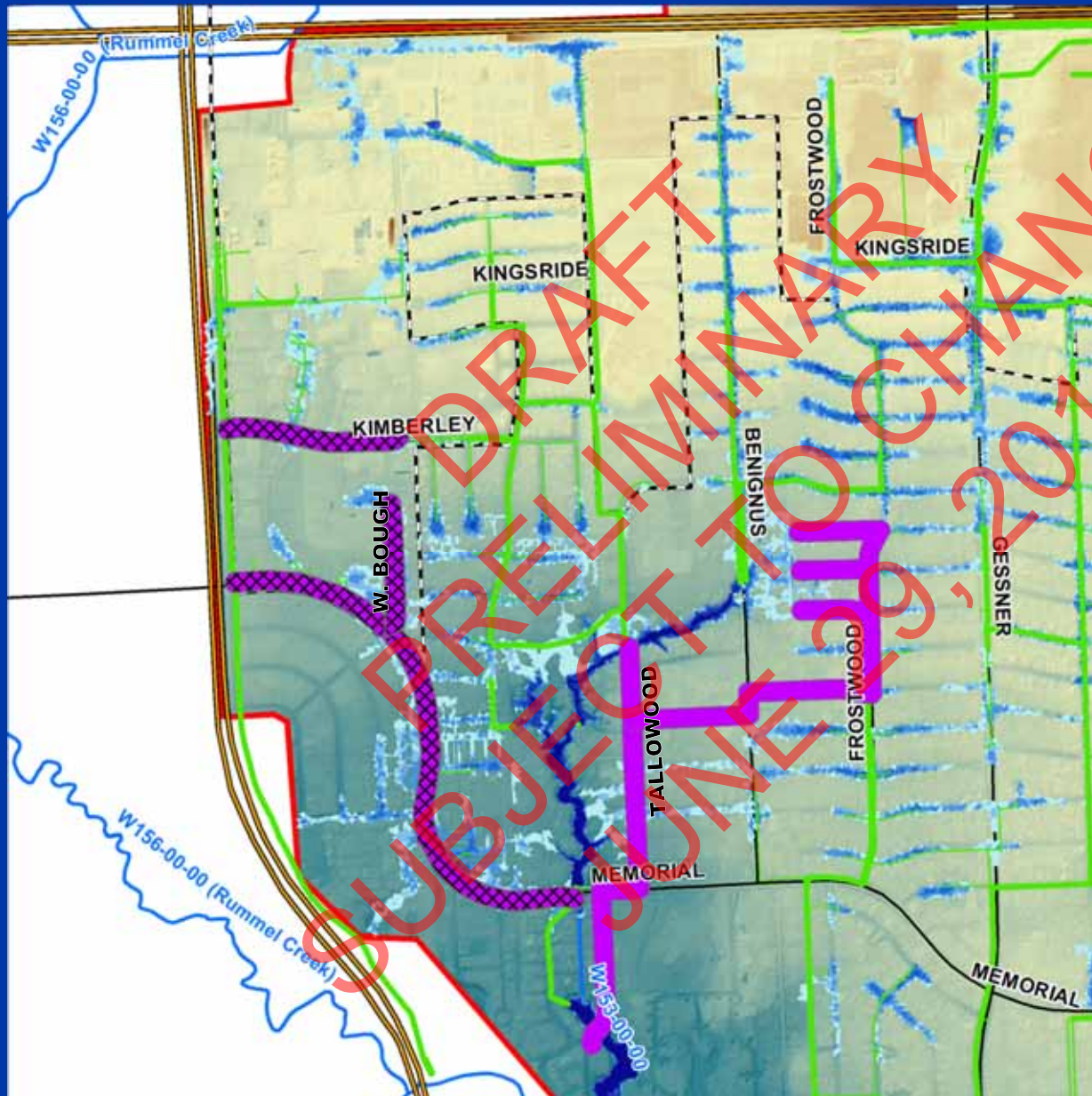
- TIRZ 17
- Storm Sewer
- HCFCD Channels
- TIRZ 17 Projects**
  - Standard Conveyance
  - Channel Improvements
  - Detention Locations
- Projects by Others**
  - Standard Conveyance
  - Channel Improvements
  - Detention Locations
- Depth of Ponding (ft)**
  - <0.25
  - 0.25 - 0.50
  - 0.50 - 1.0
  - 1.0 - 2.0
  - 2.0 - 5.0
  - >5.0
  - Existing Ponding Extent

6/29/2011



# W153 Conveyance Improvements

W153-00-00



10-Year 24-Hour Storm Event

## Legend

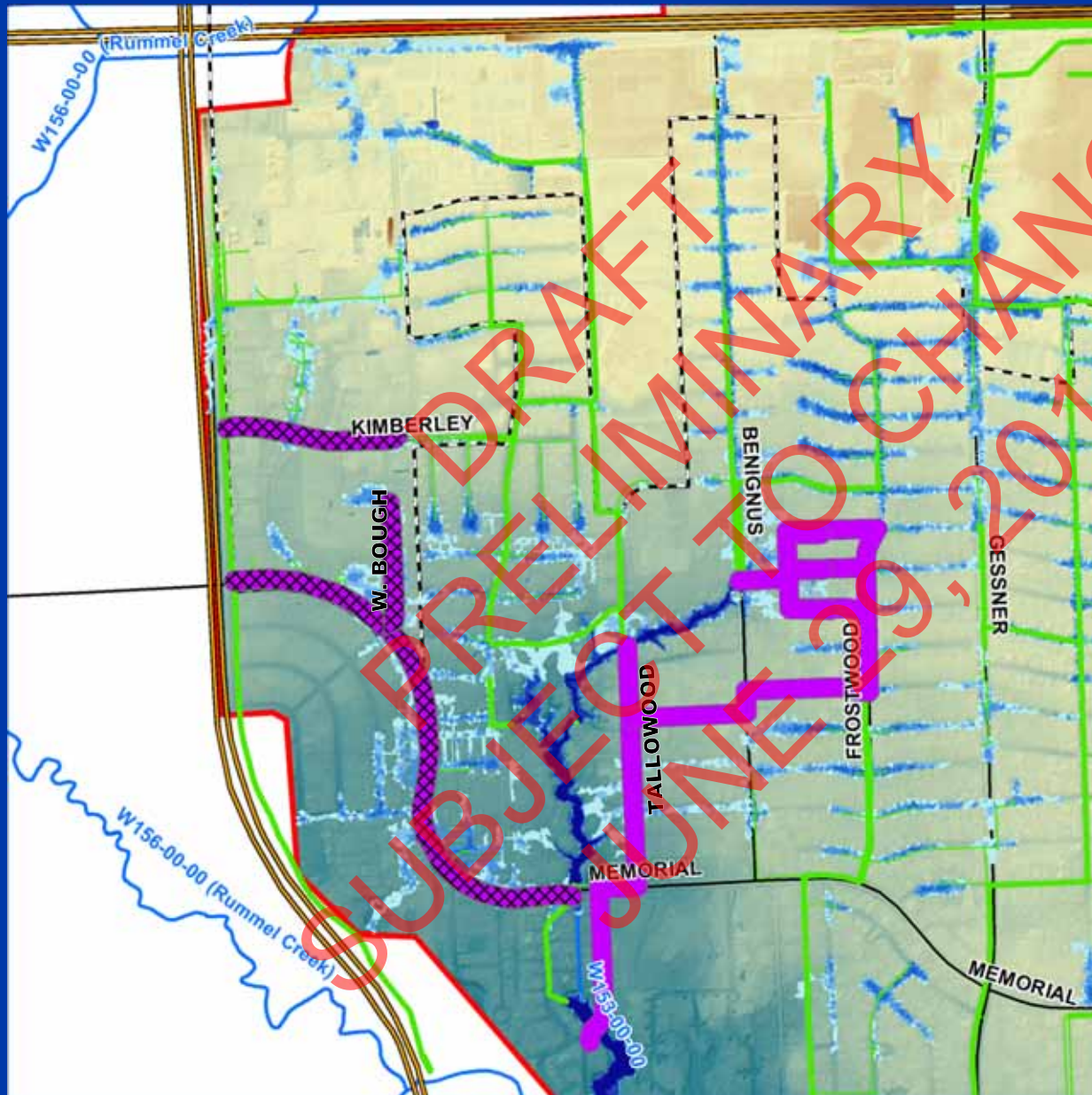
- TIRZ 17
- Storm Sewer
- HCFCD Channels
- TIRZ 17 Projects**
- Standard Conveyance
- Channel Improvements
- Detention Locations
- Projects by Others**
- Standard Conveyance
- Channel Improvements
- Detention Locations
- Depth of Ponding (ft)**
- <0.25
- 0.25 - 0.50
- 0.50 - 1.0
- 1.0 - 2.0
- 2.0 - 5.0
- >5.0
- Existing Ponding Extent

6/29/2011



# W153 Conveyance Improvements

W153-00-00



10-Year 24-Hour Storm Event

## Legend

- TIRZ 17
- Storm Sewer
- HCFCD Channels
- TIRZ 17 Projects**
  - Standard Conveyance
  - Channel Improvements
  - Detention Locations
- Projects by Others**
  - Standard Conveyance
  - Channel Improvements
  - Detention Locations
- Depth of Ponding (ft)**
  - <0.25
  - 0.25 - 0.50
  - 0.50 - 1.0
  - 1.0 - 2.0
  - 2.0 - 5.0
  - >5.0
  - Existing Ponding Extent

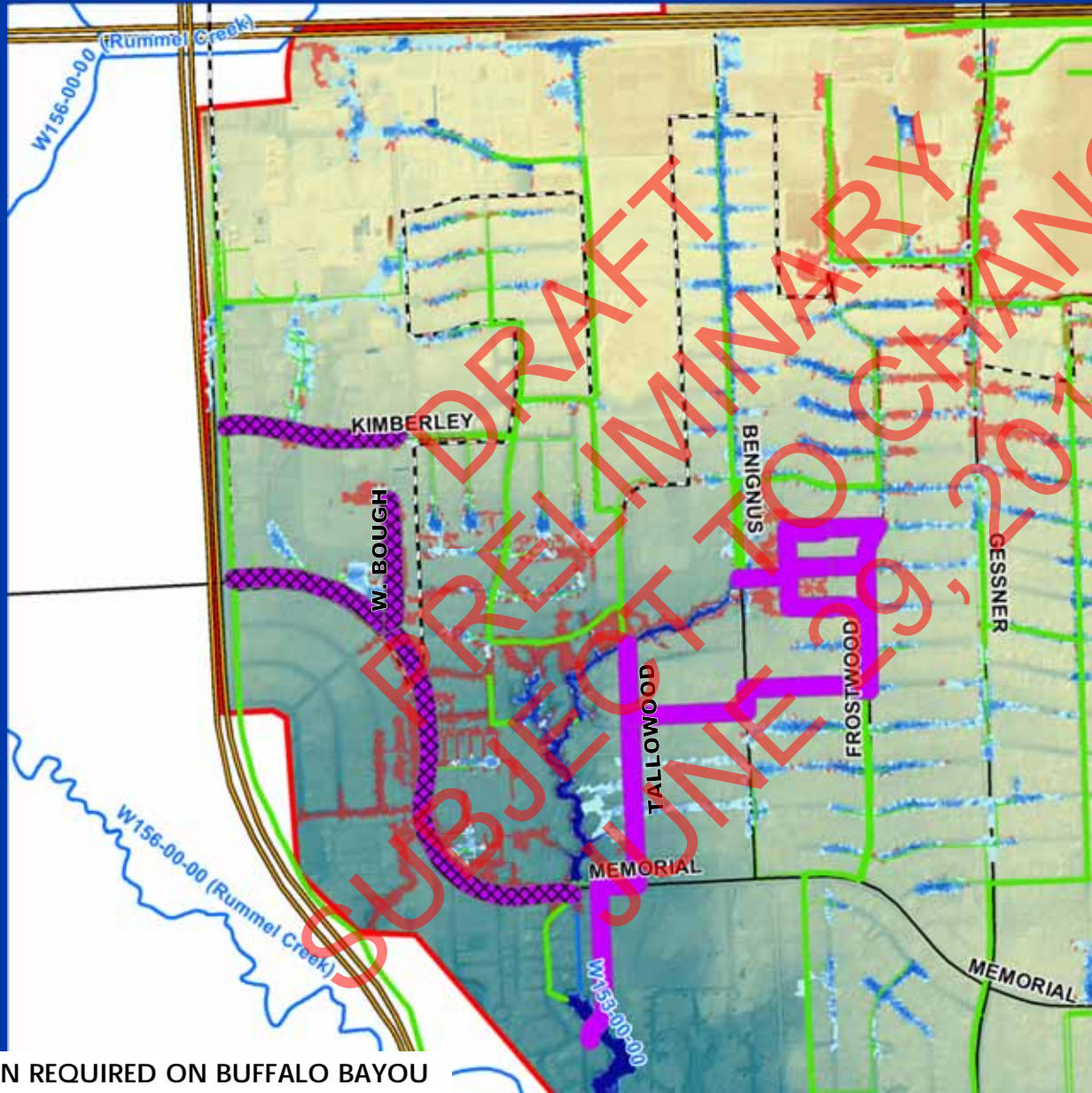
6/29/2011



# Proposed Conditions

W153-00-00

10-Year 24-Hour Storm Event



## Legend

- TIRZ 17
- Storm Sewer
- HCFCD Channels
- TIRZ 17 Projects**
  - Standard Conveyance
  - Channel Improvements
  - Detention Locations
- Projects by Others**
  - Standard Conveyance
  - Channel Improvements
  - Detention Locations
- Depth of Ponding (ft)**
  - <0.25
  - 0.25 - 0.50
  - 0.50 - 1.0
  - 1.0 - 2.0
  - 2.0 - 5.0
  - >5.0
  - Existing Ponding Extent

6/29/2011



DETENTION REQUIRED ON BUFFALO BAYOU

# Presentation Outline

- TIRZ 17 RDS Background
- W140-01-00 Briar Branch
- W151-00-00
- W153-00-00
- **Summary**

DRAFT  
PRELIMINARY  
SUBJECT TO CHANGE  
JUNE 29, 2011

6/29/2011



# Typical Project Schedule

Summary



DRAFT  
 PRELIMINARY  
 SUBJECT TO CHANGE  
 JUNE 29, 2011

6/29/2011



# Summary

## Summary

TIRZ 17 CIP ID	Description	Construction Cost	Implementation Date	Project Phase
T-1718	Kimberley Improvements	\$ 3,600,000	2011	Construction
T-1731A	W140-01-00 Briar Branch Detention	\$ 8,400,000	2012	Preliminary Engineering
T-1715	Barryknoll Lane Improvements	\$ 10,400,000	2012/2013	Preliminary Engineering
T-1726	West Bough Improvements	\$ 3,700,000	2013	Not Started
T-1732A/B	North Gessner Improvements	\$ 9,900,000	2014	Preliminary Engineering
T-1733A/B	North Witte Improvements	\$ 7,000,000	2014	Preliminary Engineering
T-1731B	Memorial Drive Improvements	\$ 8,200,000	2014	Preliminary Engineering
T-1714	Frostwood/Kingsride Improvements	\$ 5,400,000	2014	Not Started
<b>Total</b>		<b>\$ 56,600,000</b>		

6/29/2011





# Question & Answer Session

DRAFT  
PRELIMINARY  
SUBJECT TO CHANGE  
JUNE 29, 2014

Information Open House in the Lobby  
Following This Presentation

DRAFT  
PRELIMINARY  
SUBJECT TO CHANGE  
JUNE 29, 2011