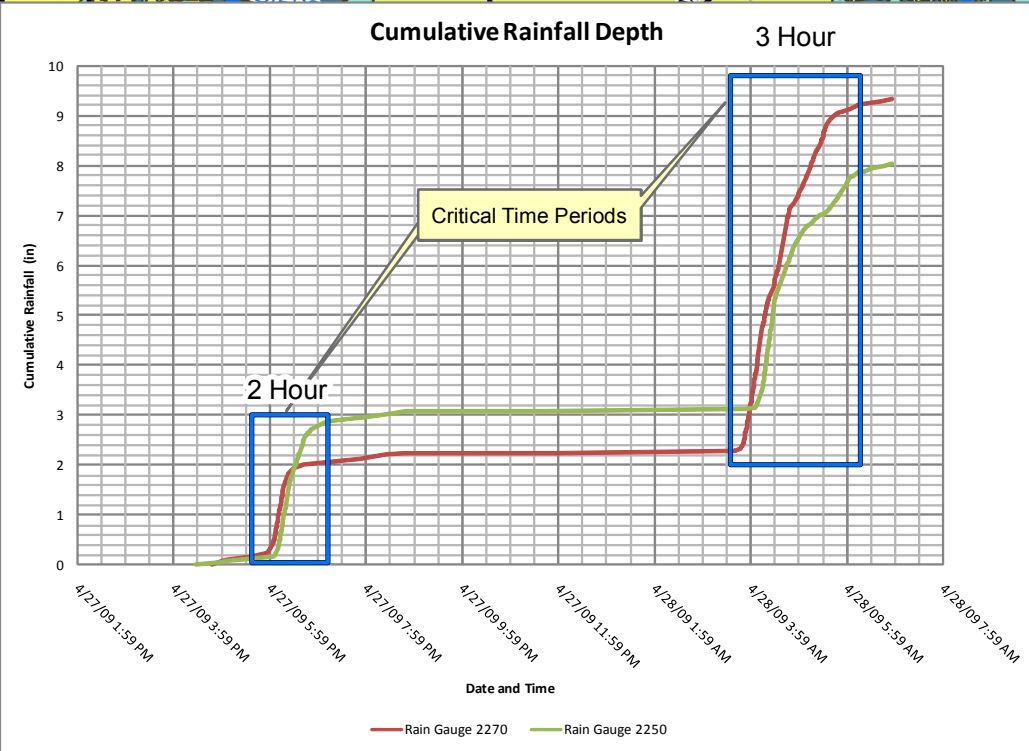


Rainfall Gage ID: 2270

Rainfall Gage ID: 2250

| Rainfall Maximums (in) : Rain Gage 2270 |        |        |        |         |         |
|---|--------|--------|--------|---------|---------|
|   | 1-hour | 3-hour | 6-hour | 12-hour | 24-hour |
| April 27-28, 2009                       | 4.8    | 7.0    | 7.1    | 8.9     | 9.4     |
| Hurricane Ike<br>9/12/2008 - 9/14/2008  | 2.8    | 4.1    | 5.7    | 6.3     | 6.4     |
| TS Alison<br>6/4/2001 - 6/10/2001       | 1.0    | 1.7    | 2.7    | 3.7     | 3.8     |

| Rainfall Maximums (in) : Rain Gage 2250 |        |        |        |         |         |
|---|--------|--------|--------|---------|---------|
|   | 1-hour | 3-hour | 6-hour | 12-hour | 24-hour |
| April 27-28, 2009                       | 3.6    | 5.0    | 5.0    | 7.7     | 8.1     |
| Hurricane Ike<br>9/12/2008 - 9/14/2008  | 3.0    | 6.2    | 7.1    | 8.3     | 8.8     |
| TS Alison<br>6/4/2001 - 6/10/2001       | N/A    |        |        |         |         |



**Legend**

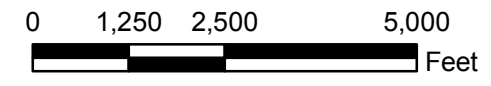
- TIRZ 17 Boundary
- Rainfall Gages
- HCFCD Channels
- 500 Year Floodplain
- 100 Year Floodplain

**Rainfall Intensity**

- 0.5
- 1
- 2
- 3
- 4
- 5
- 6
- 7
- 8
- 9
- 10



### Rainfall Totals April 27 - 28, 2009



Legend 10 Year 25 Year 50 Year 100 Year



# Exhibit 6

## Briar Branch Drainage Study

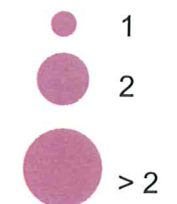
### Drainage Problems Survey Results



### Legend

#### Survey Results

# of Complaints



Police Stations

Schools

Fire Stations

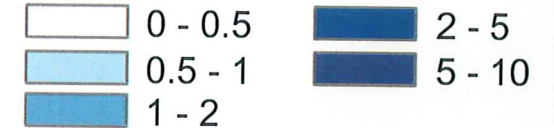
HCFC Channel

Overland Sheetflow Lines

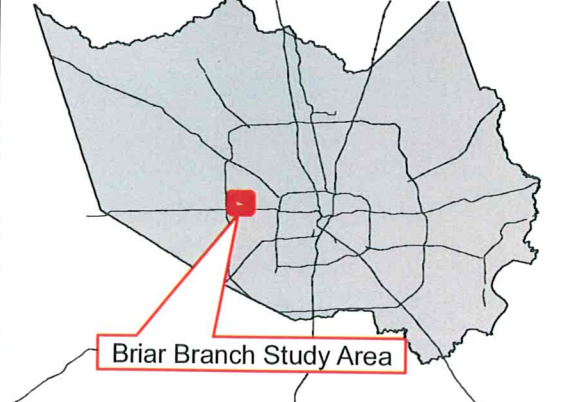
Briar Branch Study Limits

TIRZ 17 Boundary

Ponding Depth (ft)



Harris County Vicinity Map



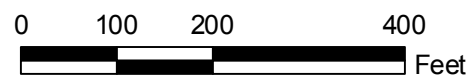
City of Houston TIRZ 17

Map Document: (L:\121 5/20/2007 2:30:29 PM) 20-10550-000\Prod\GIS\Projects\MXD\Version\_9\_2\Ex6\_Briar\_Branch\_Drainage\_Problems\_Survey\_Resu...\_2.mxd

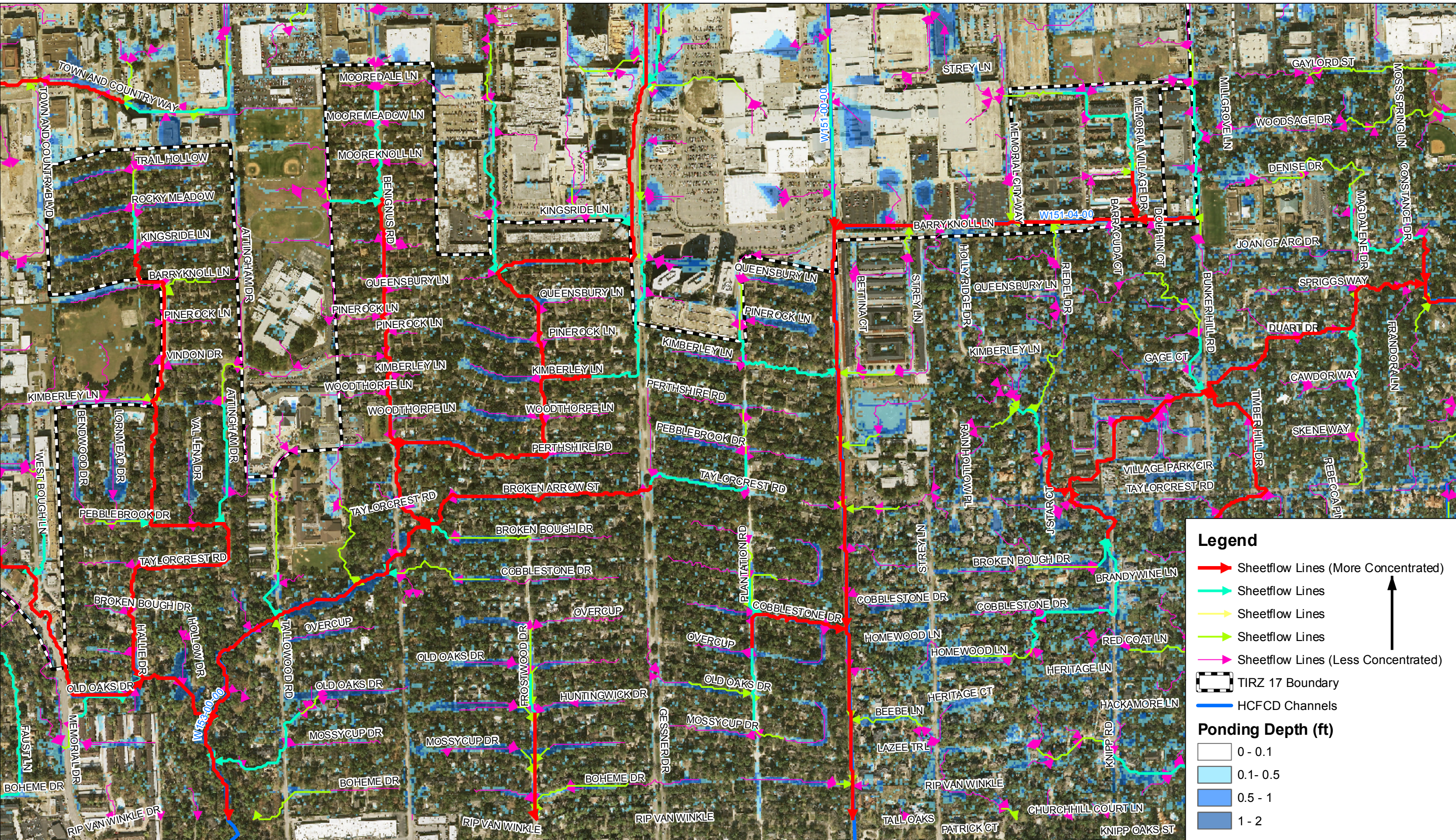




Briar Branch Overland Sheetflow Ponding  
 From Briar Branch Study Exhibit # 6  
 August 2007







**Legend**

- Sheetflow Lines (More Concentrated)
- Sheetflow Lines
- Sheetflow Lines
- Sheetflow Lines
- Sheetflow Lines (Less Concentrated)
- TIRZ 17 Boundary
- HCFCD Channels

**Ponding Depth (ft)**

- 0 - 0.1
- 0.1 - 0.5
- 0.5 - 1
- 1 - 2



Overland Sheetflow Ponding

